

# pro Caspase 7 Rabbit mAb

货号: **AYM28891**

## 产品信息

|       |   |
|-------|---|
| 反应    | Human   |
| 宿主    | Rabbit  |
| 克隆性   | Monoclonal  |
| 预测反应  |   |
| 应用    | WB IHC IF/ICC   |
| 推荐浓度  | <b>WB:</b> 1:500 - 1:2000<br><b>IHC:</b> 1:50 - 1:200<br><b>IF/ICC:</b> 1:50 - 1:200            |
| 理论分子量 | 28kDa/31kDa/34kDa/37kDa   |
| 实测分子量 | 34kDa   |
| 形式    | Liquid  |
| 保存条件  | Store at -20°C. Avoid freeze / thaw cycles.<br>Buffer: PBS with 0.75% BSA, 50% glycerol, pH7.3. |
| 偶联物   | Unconjugated  |
| 阳性对照  | Mouse liver, Rat liver  |
| 细胞定位  | Cytoplasm   |
| 纯化    | Affinity purification   |

## 抗原信息

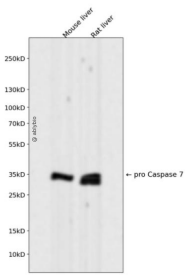
|      |   |
|------|---|
| 抗原信息 | Recombinant fusion protein corresponding to Human pro Caspase 7.  |
| 序列   | IYGKDGVTPIKDLTAHFRGDRCKTLLEKPKLFFIQACRGTELDGDIQADSGPINDTDANPRYKIPVEADFLFAYSTVPGYYS<br>WRSPGRGSWFVQALCSILE |

## 靶点信息

|      |  |
|------|--|
| 研究背景 | This gene encodes a member of the cysteine-aspartic acid protease (caspase) family. Sequential activation of caspases plays a central role in the execution-phase of cell apoptosis. Caspases exist as inactive pro enzymes which undergo proteolytic processing at conserved aspartic residues to produce two subunits, large and small, that dimerize to form the active enzyme. The precursor of the encoded protein is cleaved by caspase 3 and 10, is activated upon cell death stimuli and induces apoptosis. Alternatively spliced transcript variants encoding multiple isoforms have been observed for this gene. |
|------|--|

|       |  |
|-------|--|
| 基因ID  | 840  |
| 基因名   | CASP7  |
| Swiss | P55210   |
| 别名    | CASP7;CASP-7;CMH-1;ICE-LAP3;LICE2;MCH3;caspase-7;Casp7 |

## 产品验证



Western blot analysis of pro Caspase 7 expressed in Mouse liver,Rat liver using pro Caspase 7 Rabbit m Ab at 1:1000. Secondary antibody: HRP Goat Anti-Rabbit IgG (H+L) at 1:5000. Lysates/proteins: 30ug per lane. Blocking buffer: 5% non-fat dry milk in TBST. Detection: ECL Enhanced Kit. Exposure time: 120s

## 实验步骤

访问官网浏览详情: [www.ablybio.cn](http://www.ablybio.cn)