

# CD8 Rabbit mAb

货号: **AYM28889**

## 产品信息

反应	Human
宿主	Rabbit
克隆性	Monoclonal
预测反应	
应用	WB IHC IF/ICC
推荐浓度	<b>WB:</b> 1:500 - 1:2000 <b>IHC:</b> 1:50 - 1:200 <b>IF/ICC:</b> 1:50 - 1:200
理论分子量	21kDa/25kDa/30kDa
实测分子量	32kDa
形式	Liquid
保存条件	Store at -20°C. Avoid freeze / thaw cycles. Buffer: PBS with 0.75% BSA,50% glycerol,pH7.3.
偶联物	Unconjugated
阳性对照	THP-1,Mouse spleen
细胞定位	Cell membrane,Secreted,Single-pass type I membrane protein
纯化	Affinity purification

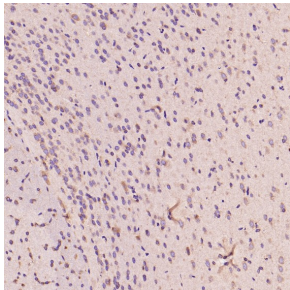
## 抗原信息

抗原信息	Recombinant fusion protein corresponding to Human CD8.
序列	SQNKPKAAEGLDTQRFSGKRLGDTFVLTLSDFRRENEGYFCSALSNSIMYFSHFVPVFLPAKPTTTTPAPRPPTPAPTIASQ PLSLRPEACRPAAGGAVHTRGLDFA

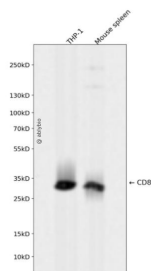
## 靶点信息

研究背景	The CD8 antigen is a cell surface glycoprotein found on most cytotoxic T lymphocytes that mediates efficient cell-cell interactions within the immune system. The CD8 antigen acts as a coreceptor with the T-cell receptor on the T lymphocyte to recognize antigens displayed by an antigen presenting cell in the context of class I MHC molecules. The coreceptor functions as either a homodimer composed of two alpha chains or as a heterodimer composed of one alpha and one beta chain. Both alpha and beta chains share significant homology to immunoglobulin variable light chains. This gene encodes the CD8 alpha chain. Multiple transcript variants encoding different isoforms have been found for this gene.
基因ID	925
基因名	CD8A
Swiss	P01732
别名	CD8A;CD8;Leu2;MAL;p32

## 产品验证



Immunohistochemical analysis of paraffin-embedded Rat kidney, using the Antibody at 1:100 dilution.



Western blot analysis of CD8 expressed in THP-1, Mouse spleen using CD8 Rabbit mAb at 1:1000. Secondary antibody: HRP Goat Anti-Rabbit IgG (H+L) at 1:5000. Lysates/proteins: 30ug per lane. Blocking buffer: 5% non-fat dry milk in TBST. Detection: ECL Enhanced Kit. Exposure time: 120s.

## 实验步骤

访问官网浏览详情: [www.ablybio.cn](http://www.ablybio.cn)