

ERp29 Rabbit mAb

货号: **AYM28878**

产品信息

反应	Human,Mouse,Rat
宿主	Rabbit
克隆性	Monoclonal
预测反应	
应用	WB IHC IF/ICC
推荐浓度	WB: 1:500 - 1:2000 IHC: 1:50 - 1:200 IF/ICC: 1:50 - 1:200
理论分子量	29kDa
实测分子量	29kDa
形式	Liquid
保存条件	Store at -20°C. Avoid freeze / thaw cycles. Buffer: PBS with 0.75% BSA,50% glycerol,pH7.3.
偶联物	Unconjugated
阳性对照	293T,HepG2,A-431,NIH/3T3,Mouse brain,Mouse kidney,Rat lung,Rat spleen,Rat kidney
细胞定位	cell surface,endoplasmic reticulum,endoplasmic reticulum lumen,melanosome,smooth endoplasmic reticulum
纯化	Affinity purification

抗原信息

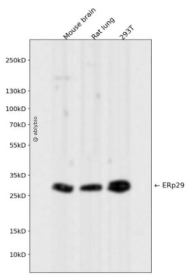
抗原信息	Recombinant fusion protein corresponding to Human ERp29.
序列	MAAAVPRAAFLSPLLPLLLGFLLLSAPHGGSLHTKGALPLDVTVFYKVIPKSKFVLVKFDTQYPYGEKQDEFKRLAENSAS SDDLVAEVGISDYGDKLM

靶点信息

研究背景	This gene encodes a protein which localizes to the lumen of the endoplasmic reticulum (ER). It is a member of the protein disulfide isomerase (PDI) protein family but lacks an active thioredoxin motif, suggesting that this protein does not function as a disulfide isomerase. The canonical protein dimerizes and is thought to play a role in the processing of secretory proteins within the ER. Alternative splicing results in multiple transcript variants encoding different isoforms. [provided by RefSeq, Dec 2016]
------	--

基因ID	10961
基因名	ERP29
Swiss	P30040
别名	C12orf8; ERp28; ERp31; HEL-S-107; PDI-DB; PDIA9

产品验证



Western blot analysis of ERp29 expressed in Mouse brain, Rat lung, 293T using ERp29 Rabbit mAb at 1:1000. Secondary antibody: HRP Goat Anti-Rabbit IgG (H+L) at 1:5000. Lysates/proteins: 30ug per lane. Blocking buffer: 5% non-fat dry milk in TBST. Detection: ECL Enhanced Kit. Exposure time: 120s.

实验步骤

访问官网浏览详情: www.ablybio.cn