

CYFIP1 Rabbit mAb

货号: **AYM28873**

产品信息

反应	Human,Mouse,Rat
宿主	Rabbit
克隆性	Monoclonal
预测反应	
应用	WB IF/ICC FC
推荐浓度	WB: 1:500 - 1:2000 IF/ICC: 1:50 - 1:200 FC: 1:20 - 1:50
理论分子量	51kDa/94kDa/145kDa
实测分子量	130kDa
形式	Liquid
保存条件	Store at -20°C. Avoid freeze / thaw cycles. Buffer: PBS with 0.75% BSA,50% glycerol,pH7.3.
偶联物	Unconjugated
阳性对照	B cells,BT-474,HepG2,HT-1080,Mouse lung,Mouse brain
细胞定位	Cell junction,Cell projection,Cytoplasm,lamellipodium,perinuclear region,ruffle,synapse,synaptosome
纯化	Affinity purification

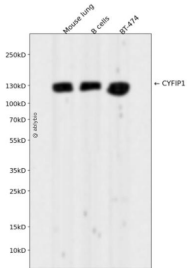
抗原信息

抗原信息	Recombinant fusion protein corresponding to Human CYFIP1.
序列	MAAQVTLEDALSNDLLEELPLPDQQPCIEPPSSLLYQPNFNTNFEDRNAFVTGIARYIEQATVHSSMNEMLEEGQEYAV MLYTWRSRCSRAIPQVKCNEQPNRVEIYEKTVLEVLEPEVTKLMNFMFYQRNAIERFCGEVRRLLCHAERRKDFVSEAYLITLGK FINMFAVLDELKNMKCSVKNDHSAYKRAAQFLRKMADPQSIQESQNLMSFLANHNKITQSLQQQLEVISGYEELLADIVNL CVDYYENRMYLTPSEKHMLLKVMGFG

靶点信息

研究背景	Component of the CYFIP1-EIF4E-FMR1 complex which binds to the mRNA cap and mediates translational repression. In the CYFIP1-EIF4E-FMR1 complex this subunit is an adapter between EIF4E and FMR1. Promotes the translation repression activity of FMR1 in brain probably by mediating its association with EIF4E and mRNA (By similarity). Regulates formation of membrane ruffles and lamellipodia. Plays a role in axon outgrowth. Binds to F-actin but not to RNA. Part of the WAVE complex that regulates actin filament reorganization via its interaction with the Arp2/3 complex. Actin remodeling activity is regulated by RAC1. Regulator of epithelial morphogenesis. As component of the WAVE1 complex, required for BDNF-NTRK2 endocytic trafficking and signaling from early endosomes (By similarity). May act as an invasion suppressor in cancers.
基因ID	23191
基因名	CYFIP1
Swiss	Q7L576
别名	CYFIP1;P140SRA-1;SHYC;SRA-1;SRA1

产品验证



Western blot analysis of CYFIP1 expressed in Mouse lung, B cells, BT-474 using CYFIP1 Rabbit mAb at 1:1000. Secondary antibody: HRP Goat Anti-Rabbit IgG (H+L) at 1:5000. Lysates/proteins: 30ug per lane. Blocking buffer: 5% non-fat dry milk in TBST. Detection: ECL Enhanced Kit. Exposure time: 120s.

实验步骤

访问官网浏览详情: www.ablybio.cn