

67kDa Laminin Receptor Rabbit mAb

货号: **AYM28872**

产品信息

反应	Human,Mouse,Rat
宿主	Rabbit
克隆性	Monoclonal
预测反应	
应用	WB IHC IF/ICC IP FC
推荐浓度	WB: 1:500 - 1:2000 IHC: 1:50 - 1:200 IF/ICC: 1:50 - 1:200 IP: 1:20 - 1:50 FC: 1:20 - 1:50
理论分子量	32kDa
实测分子量	42kDa
形式	Liquid
保存条件	Store at -20°C. Avoid freeze / thaw cycles. Buffer: PBS with 0.75% BSA,50% glycerol,pH7.3.
偶联物	Unconjugated
阳性对照	U-87MG,HeLa,B-cell,Mouse heart,Mouse kidney,Rat liver
细胞定位	Cell membrane,Cytoplasm,Nucleus
纯化	Affinity purification

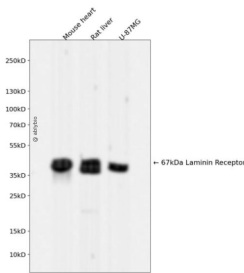
抗原信息

抗原信息	Recombinant fusion protein corresponding to Human 67kDa Laminin Receptor.
序列	MSGALDVLQMKEEDVLKFLAAGTHLGGTNLDFQMEQYIYKRKSDGIYIINLKRTWEKLLLAARAIVAIENPADVSVISSRNT GQRAVLKFAAATGATPIAGRFTPGTFTNQIAAFREPRLLVVTDPRADHQPLTEASYVNLPTIALCNTDSPLRYVDIAIPCNN KGAHSVGLMWWMLAREVLRMRGTISRHPWEVMPDLYFYRDPEEIEKEEQAAAEKAVTKKEEFQGEWTAPAPEFTATQPE VADWSEGVQVPSVPIQQFPTEDWSAQPATEDWSAAPTAAQATEWVGATTDWS

靶点信息

研究背景	Laminins, a family of extracellular matrix glycoproteins, are the major noncollagenous constituent of basement membranes. They have been implicated in a wide variety of biological processes including cell adhesion, differentiation, migration, signaling, neurite outgrowth and metastasis. Many of the effects of laminin are mediated through interactions with cell surface receptors. These receptors include members of the integrin family, as well as non-integrin laminin-binding proteins. This gene encodes a high-affinity, non-integrin family, laminin receptor 1. This receptor has been variously called 67 kD laminin receptor, 37 kD laminin receptor precursor (37LRP) and p40 ribosome-associated protein. The amino acid sequence of laminin receptor 1 is highly conserved through evolution, suggesting a key biological function. It has been observed that the level of the laminin receptor transcript is higher in colon carcinoma tissue and lung cancer cell line than their normal counterparts. Also, there is a correlation between the upregulation of this polypeptide in cancer cells and their invasive and metastatic phenotype. Multiple copies of this gene exist, however, most of them are pseudogenes thought to have arisen from retropositional events. Two alternatively spliced transcript variants encoding the same protein have been found for this gene.
基因ID	3921
基因名	RPSA
Swiss	P08865
别名	RPSA;37LRP;67LR;ICAS;LAMBR;LAMR1;LBP;LBP/p40;LRP;LRP/LR;NEM/1CHD4;SA;lamR;p40

产品验证



Western blot analysis of 67kDa Laminin Receptor expressed in Mouse heart, Rat liver, U-87MG using 67kDa Laminin Receptor Rabbit mAb at 1:1000. Secondary antibody: HRP Goat Anti-Rabbit IgG (H+L) at 1:5000. Lysates/proteins: 30ug per lane. Blocking buffer: 5% non-fat dry milk in TBST. Detection: ECL Enhanced Kit. Exposure time: 120s.

实验步骤

访问官网浏览详情: www.ablybio.cn