

RHEB Rabbit mAb

货号: **AYM28870**

产品信息

反应	Human
宿主	Rabbit
克隆性	Monoclonal
预测反应	
应用	WB IHC IF/ICC FC
推荐浓度	WB: 1:500 - 1:2000 IHC: 1:50 - 1:200 IF/ICC: 1:50 - 1:200 FC: 1:20 - 1:50
理论分子量	20kDa
实测分子量	20kDa
形式	Liquid
保存条件	Store at -20°C. Avoid freeze / thaw cycles. Buffer: PBS with 0.75% BSA,50% glycerol,pH7.3.
偶联物	Unconjugated
阳性对照	DU145,U-87MG,Mouse brain
细胞定位	Cytoplasm,Cytoplasmic side,Endomembrane system,Endoplasmic reticulum membrane,Golgi apparatus membrane,Lipid-anchor,cytosol
纯化	Affinity purification

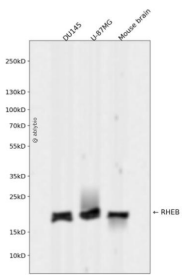
抗原信息

抗原信息	Recombinant fusion protein corresponding to Human RHEB.
序列	MPQSKSRKIAILGYRSVGKSSLTIQFVEGQFVDSYDPTIENTFTKLITVNGQEYHLQLVDTAGQDEYSIFPQTYSIDINGYILV YSVTSIKSFEVIKVIHGKLLDMVGKQIPIMLVGNKKDLHMERSVISYEEGKALAESWNAAFLESSAKENQTAVDVFRRIILEAE KMDGAASQGKSS

靶点信息

研究背景	This gene is a member of the small GTPase superfamily and encodes a lipid-anchored, cell membrane protein with five repeats of the RAS-related GTP-binding region. This protein is vital in regulation of growth and cell cycle progression due to its role in the insulin/TOR/S6K signaling pathway. The protein has GTPase activity and shuttles between a GDP-bound form and a GTP-bound form, and farnesylation of the protein is required for this activity. Three pseudogenes have been mapped, two on chromosome 10 and one on chromosome 22.
基因ID	6009
基因名	RHEB
Swiss	Q15382
别名	RHEB;RHEB2

产品验证



Western blot analysis of RHEB expressed in DU145,U-87MG,Mouse brain using RHEB Rabbit mAb at 1:1000. Secondary antibody: HRP Goat Anti-Rabbit IgG (H+L) at 1:5000. Lysates/proteins: 30ug per lane. Blocking buffer: 5% non-fat dry milk in TBST. Detection: ECL Enhanced Kit. Exposure time: 120s.

实验步骤

访问官网浏览详情: www.ablybio.cn