

CCL4/MIP1 beta Rabbit mAb

货号: **AYM28867**

产品信息

反应	Human,Mouse
宿主	Rabbit
克隆性	Monoclonal
预测反应	
应用	WB IF/ICC IP
推荐浓度	WB: 1:500 - 1:2000 IF/ICC: 1:50 - 1:200 IP: 1:20 - 1:50
理论分子量	10kDa
实测分子量	12kDa
形式	Liquid
保存条件	Store at -20°C. Avoid freeze / thaw cycles. Buffer: PBS with 0.75% BSA,50% glycerol,pH7.3.
偶联物	Unconjugated
阳性对照	Rat lung,Rat spleen
细胞定位	Secreted
纯化	Affinity purification

抗原信息

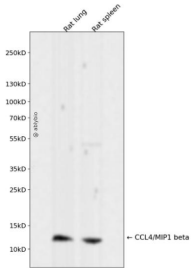
抗原信息	Recombinant fusion protein corresponding to Human CCL4/MIP1 beta.
序列	MKLCVTVLSLLMLVAAFCSALSAPMGSDPPTACCFSTARKLPRNFVVDYETSSLCSQPAVVFQTKRSKQVCADPSES WVQEYVYDLELN

靶点信息

研究背景	The protein encoded by this gene is a mitogen-inducible monokine and is one of the major HIV-suppressive factors produced by CD8+ T-cells. The encoded protein is secreted and has chemokinetic and inflammatory functions.
基因ID	6351

基因名	
Swiss	P13236
别名	CCL4;ACT2;AT744.1;G-26;HC21;LAG-1;LAG1;MIP-1-beta;MIP1B;MIP1B1;SCYA2;SCYA4

产品验证



Western blot analysis of CCL4/MIP1 beta expressed in Rat lung,Rat spleen using CCL4/MIP1 beta Rabbit mAb at 1:1000. Secondary antibody: HRP Goat Anti-Rabbit IgG (H+L) at 1:5000. Lysates/proteins: 30 ug per lane. Blocking buffer: 5% non-fat dry milk in TBST. Detection: ECL Enhanced Kit. Exposure time: 120s.

实验步骤

访问官网浏览详情: www.ablybio.cn