

SMCHD1 Rabbit mAb

货号: **AYM28857**

产品信息

反应	Human
宿主	Rabbit
克隆性	Monoclonal
预测反应	
应用	WB IHC
推荐浓度	WB: 1:500 - 1:2000 IHC: 1:50 - 1:200
理论分子量	85kDa/215kDa/226kDa
实测分子量	226kDa
形式	Liquid
保存条件	Store at -20°C. Avoid freeze / thaw cycles. Buffer: PBS with 0.75% BSA,50% glycerol,pH7.3.
偶联物	Unconjugated
阳性对照	HL-60,SKOV3,Jurkat,U-251MG,HepG2,Rat brain
细胞定位	Chromosome
纯化	Affinity purification

抗原信息

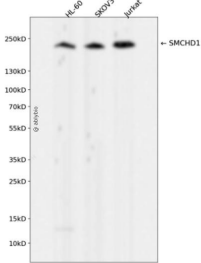
抗原信息	Recombinant fusion protein corresponding to Human SMCHD1.
序列	TTDAARRIYDETQGRQQVLPDLSIYKKTLPDWKRSPLHFRNGKLYFKPIGDPVFARDLLTFPDNVEHCETVFGMLLGDITIL DNLDAANHRYKEVVKITHCPTLLTRDGDRIKNSGKFGGLQNKAPPMDKLRGMVFGAPVPKQCLILGEQIDLLQQYRSAVC KLDSVNKDLNSQLEYLRTPDMRKKKQELDEHEKNLKLIEEKLGMTPIRKCNDSL RHSPKVETDCPVPPKMRMRREATRQNR IITKTDV

靶点信息

研究背景	This gene encodes a protein which contains a hinge region domain found in members of the SMC (structural maintenance of chromosomes) protein family.
基因ID	23347

基因名	SMCHD1
Swiss	A6NHR9
别名	SMCHD1;BAMS;FSHD2

产品验证



Western blot analysis of SMCHD1 expressed in HL-60,SKOV3,Jurkat using SMCHD1 Rabbit mAb at 1:1000. Secondary antibody: HRP Goat Anti-Rabbit IgG (H+L) at 1:5000. Lysates/proteins: 30ug per lane. Blocking buffer: 5% non-fat dry milk in TBST. Detection: ECL Enhanced Kit. Exposure time: 120s.

实验步骤

访问官网浏览详情: www.ablybio.cn