

# GBA Rabbit mAb

货号: **AYM28853**

## 产品信息

反应	Human,Rat
宿主	Rabbit
克隆性	Monoclonal
预测反应	
应用	WB IHC
推荐浓度	<b>WB:</b> 1:500 - 1:2000 <b>IHC:</b> 1:50 - 1:200
理论分子量	60kDa
实测分子量	60kDa
形式	Liquid
保存条件	Store at -20°C. Avoid freeze / thaw cycles. Buffer: PBS with 0.75% BSA,50% glycerol,pH7.3.
偶联物	Unconjugated
阳性对照	SH-SY5Y,MCF7,Rat brain
细胞定位	Luminal side,Lysosome membrane,Peripheral membrane protein
纯化	Affinity purification

## 抗原信息

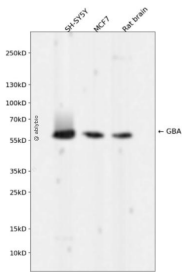
抗原信息	Recombinant fusion protein corresponding to Human GBA.
序列	VDSPHVDITKDTFYKQPMFYHLGHFSKFIPEGSQRVGLVASQKNDLDAVALMHPDGSVVVVVLRSSKDVPLTIKDPAVG FLETISPGYSIHTYLWRRQ

## 靶点信息

研究背景	This gene encodes a lysosomal membrane protein that cleaves the beta-glucosidic linkage of glycosylceramide, an intermediate in glycolipid metabolism. Mutations in this gene cause Gaucher disease, a lysosomal storage disease characterized by an accumulation of glucocerebrosides. A related pseudogene is approximately 12 kb downstream of this gene on chromosome 1. Alternative splicing results in multiple transcript variants. [provided by RefSeq, Jan 2010]
基因ID	2629

基因名	GBA
Swiss	P04062
别名	GBA;GBA1;GCB;GLUC

## 产品验证



Western blot analysis of GBA expressed in SH-SY5Y, MCF7, Rat brain using GBA Rabbit mAb at 1:1000. Secondary antibody: HRP Goat Anti-Rabbit IgG (H+L) at 1:5000. Lysates/proteins: 30ug per lane. Blocking buffer: 5% non-fat dry milk in TBST. Detection: ECL Enhanced Kit. Exposure time: 120s.

## 实验步骤

访问官网浏览详情: [www.ablybio.cn](http://www.ablybio.cn)