

# PDGF Receptor beta Rabbit mAb

货号: **AYM28830**

## 产品信息

反应	Human,Mouse,Rat
宿主	Rabbit
克隆性	Monoclonal
预测反应	
应用	<a href="#">WB</a> <a href="#">IHC</a> <a href="#">IF/ICC</a> <a href="#">IP</a>
推荐浓度	<b>WB:</b> 1:500 - 1:2000 <b>IHC:</b> 1:50 - 1:200 <b>IF/ICC:</b> 1:50 - 1:200 <b>IP:</b> 1:20 - 1:50
理论分子量	37kDa/123kDa
实测分子量	170kDa
形式	Liquid
保存条件	Store at -20°C. Avoid freeze / thaw cycles. Buffer: PBS with 0.75% BSA,50% glycerol,pH7.3.
偶联物	Unconjugated
阳性对照	SH-SY5Y,mouse lung,NIH/3T3,C2C12
细胞定位	Cell membrane,Cytoplasmic vesicle,Lysosome lumen,Single-pass type I membrane protein
纯化	Affinity purification

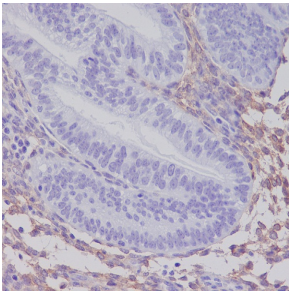
## 抗原信息

抗原信息	Recombinant fusion protein corresponding to Human PDGF Receptor beta.
序列	DSDAYVYRLQVSSINVSNAVQTVVRQGENITLMCIVIGNEVVNFEWYPRKESGRLVEPVTDFFLLDMPYHIRSILHIPSAE LEDSGTYTCNVTESVNDH

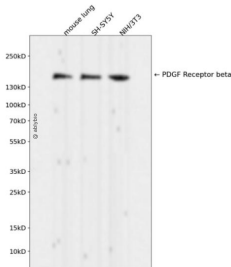
## 靶点信息

研究背景	This gene encodes a cell surface tyrosine kinase receptor for members of the platelet-derived growth factor family. These growth factors are mitogens for cells of mesenchymal origin. The identity of the growth factor bound to a receptor monomer determines whether the functional receptor is a homodimer or a heterodimer, composed of both platelet-derived growth factor receptor alpha and beta polypeptides. This gene is flanked on chromosome 5 by the genes for granulocyte-macrophage colony-stimulating factor and macrophage-colony stimulating factor receptor; all three genes may be implicated in the 5-q syndrome. A translocation between chromosomes 5 and 12, that fuses this gene to that of the translocation, ETV6, leukemia gene, results in chronic myeloproliferative disorder with eosinophilia.
基因ID	5159
基因名	PDGFRB
Swiss	P09619
别名	CD140B;IBGC4;IMF1;JTK12;KOGS;PDGFR;PDGFR-1;PDGFR1;PENTT;PDGF Receptor beta;PDGFRB;PDGFR beta

## 产品验证



Immunohistochemical analysis of paraffin-embedded human uterus, using PDGF Receptor beta Antibody.



Western blot analysis of PDGF Receptor beta expressed in mouse lung, SH-SY5Y, NIH/3T3 using PDGF Receptor beta Rabbit mAb at 1:1000. Secondary antibody: HRP Goat Anti-Rabbit IgG (H+L) at 1:5000. Lysates/proteins: 30ug per lane. Blocking buffer: 5% non-fat dry milk in TBST. Detection: ECL Enhanced Kit. Exposure time: 120s.

## 实验步骤

访问官网浏览详情: [www.ablybio.cn](http://www.ablybio.cn)