

Cytokeratin 15 Rabbit mAb

货号: **AYM28826**

产品信息

反应	Human,Mouse
宿主	Rabbit
克隆性	Monoclonal
预测反应	
应用	WB IHC IF/ICC FC
推荐浓度	WB: 1:500 - 1:2000 IHC: 1:50 - 1:200 IF/ICC: 1:50 - 1:200 FC: 1:20 - 1:50
理论分子量	45kDa
实测分子量	45kDa
形式	Liquid
保存条件	Store at -20°C. Avoid freeze / thaw cycles. Buffer: PBS with 0.75% BSA,50% glycerol,pH7.3.
偶联物	Unconjugated
阳性对照	Cal-27
细胞定位	cytoskeleton,cytosol,extracellular exosome,nucleus
纯化	Affinity purification

抗原信息

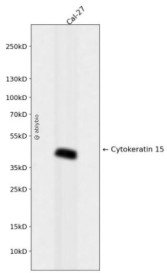
抗原信息	Recombinant fusion protein corresponding to Human Cytokeratin 15 .
序列	YATQLQQIQGLIGGLEAQLSELRCEMEAQNQEYKMLLDIKTRLEQEIATYRSLLEGQDAKMAGIAIREASSGGGGSSSNFHI NVEESVDGQVSSHKREI

靶点信息

研究背景	The protein encoded by this gene is a member of the keratin gene family. The keratins are intermediate filament proteins responsible for the structural integrity of epithelial cells and are subdivided into cytokeratins and hair keratins. Most of the type I cytokeratins consist of acidic proteins which are arranged in pairs of heterotypic keratin chains and are clustered in a region on chromosome 17q21.2. [provided by RefSeq, Jul 2008]
------	--

基因ID	3866
基因名	KRT15
Swiss	P19012
别名	CK15; K15; K1CO

产品验证



Western blot analysis of Cytokeratin 15 expressed in Cal-27 using Cytokeratin 15 Rabbit mAb at 1:1000. Secondary antibody: HRP Goat Anti-Rabbit IgG (H+L) at 1:5000. Lysates/proteins: 30ug per lane. Blocking buffer: 5% non-fat dry milk in TBST. Detection: ECL Enhanced Kit. Exposure time: 120s.

实验步骤

访问官网浏览详情: www.ablybio.cn