

MIF Rabbit mAb

货号: **AYM28825**

产品信息

反应	Human,Mouse,Rat
宿主	Rabbit
克隆性	Monoclonal
预测反应	
应用	WB IP FC
推荐浓度	WB: 1:500 - 1:2000 IP: 1:20 - 1:50 FC: 1:20 - 1:50
理论分子量	12kDa
实测分子量	12kDa
形式	Liquid
保存条件	Store at -20°C. Avoid freeze / thaw cycles. Buffer: PBS with 0.75% BSA,50% glycerol,pH7.3.
偶联物	Unconjugated
阳性对照	293T,HL-60,Mouse liver,Mouse brain,Mouse kidney,Rat liver,Rat brain
细胞定位	Cytoplasm,Secreted
纯化	Affinity purification

抗原信息

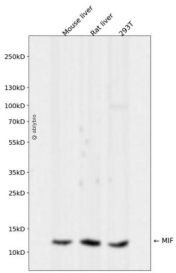
抗原信息	Recombinant fusion protein corresponding to Human MIF.
序列	MPMFIVNTNVPRASVPDGFSELTQQLAQATGKPPQYIAVHVVPDQLMAFGGSSEPCALCSLHSGIKIGGAQNRYSKLLC GLLAERLRISPDRVYINYDMNAANVGWNNSTFA

靶点信息

研究背景	This gene encodes a lymphokine involved in cell-mediated immunity, immunoregulation, and inflammation. It plays a role in the regulation of macrophage function in host defense through the suppression of anti-inflammatory effects of glucocorticoids. This lymphokine and the JAB1 protein form a complex in the cytosol near the peripheral plasma membrane, which may indicate an additional role in integrin signaling pathways.
------	--

基因ID	4282
基因名	MIF
Swiss	P14174
别名	MIF;GIF;GLIF;MMIF

产品验证



Western blot analysis of MIF expressed in Mouse liver, Rat liver, 293T using MIF Rabbit mAb at 1:1000. Secondary antibody: HRP Goat Anti-Rabbit IgG (H+L) at 1:5000. Lysates/proteins: 30ug per lane. Blocking buffer: 5% non-fat dry milk in TBST. Detection: ECL Enhanced Kit. Exposure time: 120s.

实验步骤

访问官网浏览详情: www.ablybio.cn