

K48-linkage Specific Ubiquitin Rabbit mAb

货号: AYM28823

产品信息

| | |
|-------|---|
| 反应 | Human,Mouse,Rat |
| 宿主 | Rabbit |
| 克隆性 | Monoclonal |
| 预测反应 | |
| 应用 | WB IF/ICC FC |
| 推荐浓度 | WB: 1:500 - 1:2000 IF/ICC: 1:50 - 1:200 FC: 1:20 - 1:50 |
| 理论分子量 | 8kDa |
| 实测分子量 | 15-300KDa |
| 形式 | Liquid |
| 保存条件 | Store at -20°C. Avoid freeze / thaw cycles. Buffer: PBS with 0.75% BSA,50% glycerol,pH7.3. |
| 偶联物 | Unconjugated |
| 阳性对照 | HeLa,NIH/3T3,C6 |
| 细胞定位 | Cytoplasm,Nucleus |
| 纯化 | Affinity purification |

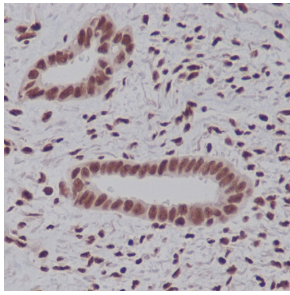
抗原信息

| | |
|------|---|
| 抗原信息 | Recombinant fusion protein corresponding to Human K48-linkage Specific Ubiquitin. |
| 序列 | MQIFVKLTGTGKTITLEVEPSDTIENVKAKIQDKEGIPPDQQRLLIFAGKQLEDGRTLSDYNIQKESTLHLVLRRLRGGMQIFVKLTGTGKTITLEVEPSDTIENVKAKIQDKEGIPPDQQRLLIFAGKQLEDGRTLSDYNIQKESTLHLVLRRLRGGMQIFVKLTGTGKTITLEVEPSDTIENVKAKIQDKEGIPPDQQRLLIFAGKQLEDGRTLSDYNIQKESTLHLVLRRLRGG |

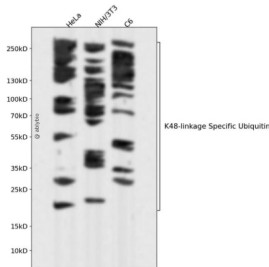
靶点信息

| | |
|-------|--|
| 研究背景 | This gene encodes ubiquitin, one of the most conserved proteins known. Ubiquitin has a major role in targeting cellular proteins for degradation by the 26S proteasome. It is also involved in the maintenance of chromatin structure, the regulation of gene expression, and the stress response. Ubiquitin is synthesized as a precursor protein consisting of either polyubiquitin chains or a single ubiquitin moiety fused to an unrelated protein. This gene consists of three direct repeats of the ubiquitin coding sequence with no spacer sequence. Consequently, the protein is expressed as a polyubiquitin precursor with a final amino acid after the last repeat. An aberrant form of this protein has been detected in patients with Alzheimer's disease and Down syndrome. Pseudogenes of this gene are located on chromosomes 1, 2, 13, and 17. Alternative splicing results in multiple transcript variants. [provided by RefSeq, Aug 2013] |
| 基因ID | 7314 |
| 基因名 | UBB |
| Swiss | POCG47 |
| 别名 | HEL-S-50;Ubiquitin;UBB |

产品验证



Immunohistochemical analysis of paraffin-embedded human endometrium carcinoma, using K48-linkage Specific Ubiquitin Antibody.



Western blot analysis of K48-linkage Specific Ubiquitin expressed in HeLa, NIH/3T3, C6 using K48-linkage Specific Ubiquitin Rabbit mAb at 1:1000. Secondary antibody: HRP Goat Anti-Rabbit IgG (H+L) at 1:5000. Lysates/proteins: 30ug per lane. Blocking buffer: 5% non-fat dry milk in TBS T. Detection: ECL Enhanced Kit. Exposure time: 120s.

实验步骤

访问官网浏览详情: www.ablybio.cn