

LAMP1 Rabbit mAb

货号: **AYM28822**

产品信息

反应	Human
宿主	Rabbit
克隆性	Monoclonal
预测反应	
应用	WB IHC
推荐浓度	WB: 1:500 - 1:2000 IHC: 1:50 - 1:200
理论分子量	38kDa/44kDa
实测分子量	120kDa
形式	Liquid
保存条件	Store at -20°C. Avoid freeze / thaw cycles. Buffer: PBS with 0.75% BSA, 50% glycerol, pH7.3.
偶联物	Unconjugated
阳性对照	Mouse liver
细胞定位	Cell membrane, Endosome membrane, Late endosome, Lysosome membrane, Single-pass type I membrane protein
纯化	Affinity purification

抗原信息

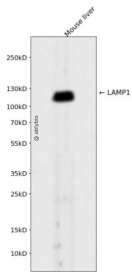
抗原信息	Recombinant fusion protein corresponding to Human LAMP1.
序列	SVNYDTKSGPKNMTFDLPDATVVLNRSSCGKENTSDPSLVIAFGRGHTLTLNFTRNATRYSVQLMSFVYNLSDTHLFPN ASSKEIKTVESITDIRADIDKKYRCVSGTQVHMNNVTVTLHDATIQA YLSNSSFSRGETRCEQDRPSPTTAPPAPPSPSPSP VPKSPVDKYNVSGTNGTCLLASMGLQLNLTYERKDNTTVTRLLNINPNKTSASGSCG

靶点信息

研究背景	The protein encoded by this gene is a member of a family of membrane glycoproteins. This glycoprotein provides selectins with carbohydrate ligands. It may also play a role in tumor cell metastasis.
基因ID	3916

基因名	LAMP1
Swiss	P11279
别名	LAMP1;CD107a;LAMP A;LGP120

产品验证



Western blot analysis of LAMP1 expressed in Mouse liver using LAMP1 Rabbit mAb at 1:1000. Secondary antibody: HRP Goat Anti-Rabbit IgG (H+L) at 1:5000. Lysates/proteins: 30ug per lane. Blocking buffer: 5% non-fat dry milk in TBST. Detection: ECL Enhanced Kit. Exposure time: 120s.

实验步骤

访问官网浏览详情: www.ablybio.cn