

EMC4 Rabbit mAb

货号: **AYM28810**

产品信息

反应	Human,Mouse,Rat
宿主	Rabbit
克隆性	Monoclonal
预测反应	
应用	WB IHC IP
推荐浓度	WB: 1:500 - 1:2000 IHC: 1:50 - 1:200 IP: 1:20 - 1:50
理论分子量	
实测分子量	18kDa
形式	Liquid
保存条件	Store at -20°C. Avoid freeze / thaw cycles. Buffer: PBS with 0.75% BSA,50% glycerol,pH7.3.
偶联物	Unconjugated
阳性对照	293T,HepG2,SH-SY5Y,U-,Mouse brain,Mouse heart,Rat brain,Mouse heart
细胞定位	
纯化	Affinity purification

抗原信息

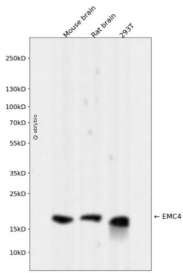
抗原信息	Recombinant fusion protein corresponding to Human EMC4.
序列	

靶点信息

研究背景	Contributes to membrane insertase activity. Involved in protein insertion into ER membrane by stop-transfer membrane-anchor sequence and tail-anchored membrane protein insertion into ER membrane. Is integral component of endoplasmic reticulum membrane. Part of EMC complex.
基因ID	51234
基因名	EMC4

Swiss	Q5J8M3
别名	

产品验证



Western blot analysis of EMC4 expressed in Mouse brain,Rat brain,293T using EMC4 Rabbit mAb at 1:1000. Secondary antibody: HRP Goat Anti-Rabbit IgG (H+L) at 1:5000. Lysates/proteins: 30ug per lane. Blocking buffer: 5% non-fat dry milk in TBST. Detection: ECL Enhanced Kit. Exposure time: 120s.

实验步骤

访问官网浏览详情: www.ablybio.cn