

Mad2L2 Rabbit mAb

货号: **AYM28806**

产品信息

反应	Human,Mouse,Rat
宿主	Rabbit
克隆性	Monoclonal
预测反应	
应用	WB IHC IF/ICC IP FC
推荐浓度	WB: 1:500 - 1:2000 IHC: 1:50 - 1:200 IF/ICC: 1:50 - 1:200 IP: 1:20 - 1:50 FC: 1:20 - 1:50
理论分子量	24kDa
实测分子量	24kDa
形式	Liquid
保存条件	Store at -20°C. Avoid freeze / thaw cycles. Buffer: PBS with 0.75% BSA,50% glycerol,pH7.3.
偶联物	Unconjugated
阳性对照	A-375,K-562,SW480,HeLa,Mouse skeletal muscle
细胞定位	Cytoplasm,Nucleus,cytoskeleton,spindle
纯化	Affinity purification

抗原信息

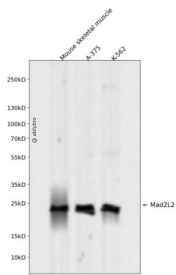
抗原信息	Recombinant fusion protein corresponding to Human Mad2L2.
序列	MTTLTRQDLNFGQVVADVLCEFLVAVHLILYVREVYPVGIFQKRKYNVPVQMSCHPELNQYIQDTLHCVKPLLEKNDVEKVVVVILDKEHRPVEKFVFEITQPPLLSISSDSLLSHVEQLLRAFILKISVCDAVLDHNPPGCTFTVLVHTREAATRNMEDIQVIKDFPWILADEQDVHMHDPRLIPLKMTSDILKMQLYVEERAHKGS

靶点信息

研究背景	The protein encoded by this gene is a component of the mitotic spindle assembly checkpoint that prevents the onset of anaphase until all chromosomes are properly aligned at the metaphase plate. The encoded protein, which is similar to MAD2L1, is capable of interacting with ADAM9, ADAM15, REV1, and REV3 proteins.
------	---

基因ID	10459
基因名	MAD2L2
Swiss	Q9UI95
别名	MAD2L2;FANCV;MAD2B;POLZ2;REV7

产品验证



Western blot analysis of Mad2L2 expressed in Mouse skeletal muscle,A-375,K-562 using Mad2L2 Rabbit mAb at 1:1000. Secondary antibody: HRP Goat Anti-Rabbit IgG (H+L) at 1:5000. Lysates/proteins: 30ug per lane. Blocking buffer: 5% non-fat dry milk in TBST. Detection: ECL Enhanced Kit. Exposure time: 120 S.

实验步骤

访问官网浏览详情: www.ablybio.cn