

TOMM20 Rabbit mAb

货号: **AYM28799**

产品信息

反应	Human,Mouse,Rat
宿主	Rabbit
克隆性	Monoclonal
预测反应	
应用	WB IHC IF/ICC FC
推荐浓度	WB: 1:500 - 1:2000 IHC: 1:50 - 1:200 IF/ICC: 1:50 - 1:200 FC: 1:20 - 1:50
理论分子量	16kDa
实测分子量	16kDa
形式	Liquid
保存条件	Store at -20°C. Avoid freeze / thaw cycles. Buffer: PBS with 0.75% BSA,50% glycerol,pH7.3.
偶联物	Unconjugated
阳性对照	293F
细胞定位	Mitochondrion outer membrane,Single-pass membrane protein
纯化	Affinity purification

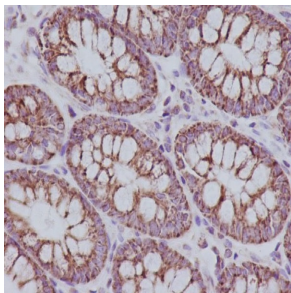
抗原信息

抗原信息	Recombinant fusion protein corresponding to Human TOMM20.
序列	MSSLPGCIGLDAATATVESEEIAELQQAVVEELGISMEELRHFIDEELEKMDCVQQRKKQLAELETWVIQKESEVAHVDQLFDDASRAVTNCESLVKDFYSKLGLQYRDSSSEDESSRPTEIIEIPDEDDDLVLSIDSGDAGSRTPKDQKLREAMAALRKSAQDVQKFMDAVNKKSSSQDLHKGTLSQMSGELSKDGD LIVSMRILGKKRTKTWHKGTLIAIQTVGPGKKYKVKFDNKGKSLLSGNHIAIDYHPPADKLYVGSRVVAKYKDG NQVWLYAGIVAETPNVKNKLRFLIFFDDGYASYVTQSELYPICRPLKKTWE DIEDISCRDFIEEYVTAYPNRPMVLLKSGQLIKTEWEGTWWKS RVEEVDGSLVRILFLVLFSTILEAEVGGGGT

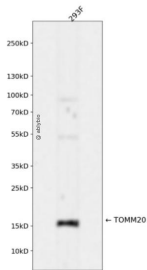
靶点信息

研究背景	Central component of the receptor complex responsible for the recognition and translocation of cytosolically synthesized mitochondrial preproteins. Together with TOM22 functions as the transit peptide receptor at the surface of the mitochondrion outer membrane and facilitates the movement of preproteins into the TOM40 translocation pore (By similarity. Required for the translocation across the mitochondrial outer membrane of cytochrome P450 monooxygenases.
基因ID	9804
基因名	TOMM20
Swiss	Q15388
别名	TOMM20;MAS20;MOM19;TOM20

产品验证



Immunohistochemical analysis of paraffin-embedded human colon, using TOMM20 Antibody.



Western blot analysis of TOMM20 expressed in 293F using TOMM20 Rabbit mAb at 1:1000. Secondary antibody: HRP Goat Anti-Rabbit IgG (H+L) at 1:5000. Lysates/proteins: 30ug per lane. Blocking buffer: 5% non-fat dry milk in TBST. Detection: ECL Enhanced Kit. Exposure time: 120s.

实验步骤

访问官网浏览详情: www.ablybio.cn