

Lambda Light chain Rabbit mAb

货号: **AYM28794**

产品信息

反应	Human
宿主	Rabbit
克隆性	Monoclonal
预测反应	
应用	WB IHC IF/ICC FC
推荐浓度	WB: 1:500 - 1:2000 IHC: 1:50 - 1:200 IF/ICC: 1:50 - 1:200 FC: 1:20 - 1:50
理论分子量	25kDa
实测分子量	25kDa
形式	Liquid
保存条件	Store at -20°C. Avoid freeze / thaw cycles. Buffer: PBS with 0.75% BSA,50% glycerol,pH7.3.
偶联物	Unconjugated
阳性对照	Mouse spleen,Rat spleen
细胞定位	extracellular exosome,extracellular region,extracellular space,plasma membrane
纯化	Affinity purification

抗原信息

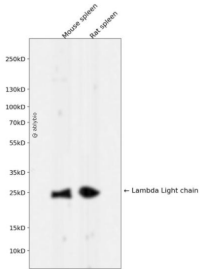
抗原信息	Recombinant fusion protein corresponding to Human Lambda Light chain.
序列	MTCSPLLLTLIIHCTGSWAQSVLTQPPSVSAAPGQKVTISCSGSSSNIGNNNYVSWYQQLPGTAPKLLIYDNNKRPSGIPDR FSGSKSGTSATLGITGLQTGDEADYYCGTWDSLSA

靶点信息

研究背景	Predicted to be involved in immune response. Located in extracellular exosome.
基因ID	28820
基因名	

Swiss	P01701/P01842
别名	IGLV151; V1-19

产品验证



Western blot analysis of Lambda Light chain expressed in Mouse spleen, Rat spleen using Lambda Light chain Rabbit mAb at 1:1000. Secondary antibody: HRP Goat Anti-Rabbit IgG (H+L) at 1:5000. Lysates/proteins: 30ug per lane. Blocking buffer: 5% non-fat dry milk in TBST. Detection: ECL Enhanced Kit. Exposure time: 120s.

实验步骤

访问官网浏览详情: www.ablybio.cn