

MEF2A+MEF2C Rabbit mAb

货号: **AYM28791**

产品信息

反应	Human,Mouse,Rat
宿主	Rabbit
克隆性	Monoclonal
预测反应	
应用	WB IHC IF/ICC FC
推荐浓度	WB: 1:500 - 1:2000 IHC: 1:50 - 1:200 IF/ICC: 1:50 - 1:200 FC: 1:20 - 1:50
理论分子量	51kDa
实测分子量	51kDa
形式	Liquid
保存条件	Store at -20°C. Avoid freeze / thaw cycles. Buffer: PBS with 0.75% BSA,50% glycerol,pH7.3.
偶联物	Unconjugated
阳性对照	RD,Mouse brain
细胞定位	cytoplasm,cytosol,nuclear speck,nucleoplasm,nucleus,sarcoplasm
纯化	Affinity purification

抗原信息

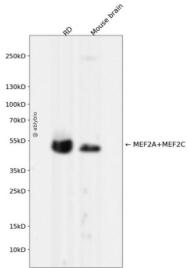
抗原信息	Recombinant fusion protein corresponding to Human MEF2A+MEF2C.
序列	NRKPDLRVLIIPPGSKNTMPSVSEDVDLLLNQRINNSQSAQSLATPVVSVATPTLPGQGMGGYPSAISTTYGTEYSLSSADL SSLSGFNTASALHLGSVTGWQQQHLHNMPPSALSQLGACTSTHLSQSSNLSLPSTQSLNIKSEPVSPPRDRTTTTPSRYPQ HTRHEAGRSPVDSLSSCSSYDGSREDHRNEFHSPIGLTRPSPDERESPSVKRMRLSEGWAT

靶点信息

研究背景	
基因ID	4208,4205

基因名	MEF2C,MEF2A
Swiss	Q06413/Q02078
别名	

产品验证



Western blot analysis of MEF2A+MEF2C expressed in RD, Mouse brain using MEF2A+MEF2C Rabbit mAb at 1:1000. Secondary antibody: HRP Goat Anti-Rabbit IgG (H+L) at 1:5000. Lysates/proteins: 30ug per lane. Blocking buffer: 5% non-fat dry milk in TBST. Detection: ECL Enhanced Kit. Exposure time: 120s.

实验步骤

访问官网浏览详情: www.ablybio.cn