

# Insulin Receptor R Rabbit mAb

货号: **AYM28789**

## 产品信息

反应	Human,Mouse,Rat
宿主	Rabbit
克隆性	Monoclonal
预测反应	
应用	WB IHC
推荐浓度	<b>WB:</b> 1:500 - 1:2000 <b>IHC:</b> 1:50 - 1:200
理论分子量	143kDa
实测分子量	80kDa
形式	Liquid
保存条件	Store at -20°C. Avoid freeze / thaw cycles. Buffer: PBS with 0.75% BSA,50% glycerol,pH7.3.
偶联物	Unconjugated
阳性对照	Mouse brain,Mouse liver,Mouse kidney,Rat kidney
细胞定位	Membrane,Single-pass type I membrane protein
纯化	Affinity purification

## 抗原信息

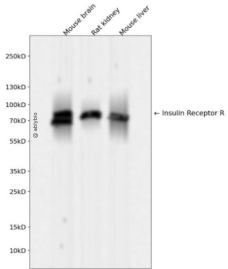
抗原信息	Recombinant fusion protein corresponding to Human Insulin Receptor R.
序列	AAGPLRLGGNSSDFEIQEDKVPREAVLSGLRHFTEYRIDIHACNHAHTVGCSAATFVFARTMPHREADGIPGKVAWEAS SKNSVLLRWLEPPDPNGLILKYEIKYRRLGEEATVLCVSRLRYAKFGGVHLALLPPGNYSARVRATSLAGNGSWTDSVAFYI LGPEEDAGGLH

## 靶点信息

研究背景	Receptor with tyrosine-protein kinase activity. Functions as a pH sensing receptor which is activated by in creased extracellular pH. Activates an intracellular signaling pathway that involves IRS1 and AKT1/PKB.
基因ID	3645

基因名	INSRR
Swiss	P14616
别名	INSRR;IRR

## 产品验证



Western blot analysis of Insulin Receptor R expressed in Mouse brain, Rat kidney, Mouse liver using Insulin Receptor R Rabbit mAb at 1:1000. Secondary antibody: HRP Goat Anti-Rabbit IgG (H+L) at 1:5000. Lysates/proteins: 30ug per lane. Blocking buffer: 5% non-fat dry milk in TBST. Detection: ECL Enhanced Kit. Exposure time: 120s.

## 实验步骤

访问官网浏览详情: [www.ablybio.cn](http://www.ablybio.cn)