

C Reactive Protein Rabbit mAb

货号: **AYM28783**

产品信息

反应	Human
宿主	Rabbit
克隆性	Monoclonal
预测反应	
应用	WB IHC IP
推荐浓度	WB: 1:500 - 1:2000 IHC: 1:50 - 1:200 IP: 1:20 - 1:50
理论分子量	10kDa/25kDa
实测分子量	25kDa
形式	Liquid
保存条件	Store at -20°C. Avoid freeze / thaw cycles. Buffer: PBS with 0.75% BSA,50% glycerol,pH7.3.
偶联物	Unconjugated
阳性对照	Human serum,Mouse liver,Mouse lung,Rat spleen
细胞定位	Secreted
纯化	Affinity purification

抗原信息

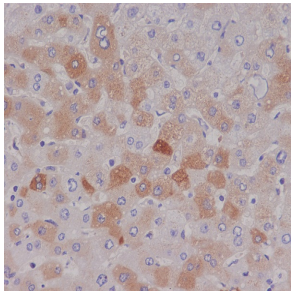
抗原信息	Recombinant fusion protein corresponding to Human C Reactive Protein.
序列	ILFEVPEVTVAPVHICTSWESASGIVEFWVDGKPRVRKSLKKGTVGAEASIILGQEQDSFGGNFEGSQSLVGDIGNVNM WDFVLSPEINTIYLGGPFSP

靶点信息

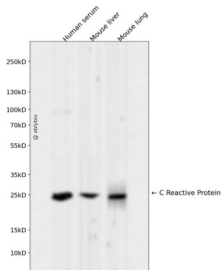
研究背景	The protein encoded by this gene belongs to the pentaxin family. It is involved in several host defense related functions based on its ability to recognize foreign pathogens and damaged cells of the host and to initiate their elimination by interacting with humoral and cellular effector systems in the blood. Consequently, the level of this protein in plasma increases greatly during acute phase response to tissue injury, infection, or other inflammatory stimuli.
------	---

基因ID	1401
基因名	CRP
Swiss	P02741
别名	CRP;PTX1

产品验证



Immunohistochemical analysis of paraffin-embedded human liver, using C Reactive Protein Anti body.



Western blot analysis of C Reactive Protein expressed in Human serum, Mouse liver, Mouse lung using C Reactive Protein Rabbit mAb at 1:1000. Secondary antibody: HRP Goat Anti-Rabbit IgG (H+L) at 1:5000. Lysates/proteins: 30ug per lane. Blocking buffer: 5% non-fat dry milk in TBST. Detection: ECL Enhanced Kit. Exposure time: 120s.

实验步骤

访问官网浏览详情: www.ablybio.cn