

alpha smooth muscle Actin Rabbit mAb

货号: **AYM28779**

产品信息

反应	Human,Mouse,Rat
宿主	Rabbit
克隆性	Monoclonal
预测反应	
应用	WB IHC IF/ICC FC
推荐浓度	WB: 1:500 - 1:2000 IHC: 1:50 - 1:200 IF/ICC: 1:50 - 1:200 FC: 1:20 - 1:50
理论分子量	42kDa
实测分子量	42kDa
形式	Liquid
保存条件	Store at -20°C. Avoid freeze / thaw cycles. Buffer: PBS with 0.75% BSA,50% glycerol,pH7.3.
偶联物	Unconjugated
阳性对照	RD,Mouse large intestine,Mouse brain,Rat lung
细胞定位	Cytoplasm,cytoskeleton
纯化	Affinity purification

抗原信息

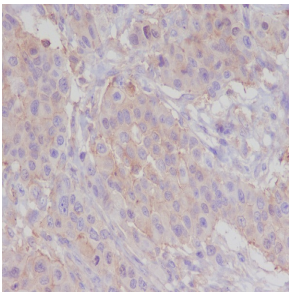
抗原信息	Recombinant fusion protein corresponding to Human alpha smooth muscle Actin.
序列	MCEEDSTALVCDNGSGLCKAGFAGDDAPRAVFPISVGRPRHQGVMVGMGQKDSYVGDEAQSQRGILTLKYPPIEHGIIT NWDDMEKIWHHSFYNELRVAP

靶点信息

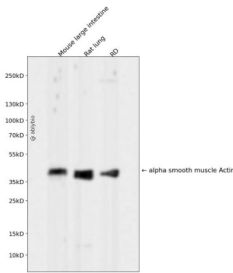
研究背景	The protein encoded by this gene belongs to the actin family of proteins, which are highly conserved proteins that play a role in cell motility, structure and integrity. Alpha, beta and gamma actin isoforms have been identified, with alpha actins being a major constituent of the contractile apparatus, while beta and gamma actins are involved in the regulation of cell motility. This actin is an alpha actin that is found in skeletal muscle. Defects in this gene cause aortic aneurysm familial thoracic type 6. Multiple alternatively spliced variants, encoding the same protein, have been identified. [provided by RefSeq, Nov 2008]
------	--

基因ID	59
基因名	ACTA2
Swiss	P62736
别名	AAT6;ACTSA;MYMY5;ACTA2;actin

产品验证



Immunohistochemical analysis of paraffin-embedded human breast carcinoma, using alpha smooth muscle Actin Antibody.



Western blot analysis of alpha smooth muscle Actin expressed in Mouse large intestine, Rat lung, RD using alpha smooth muscle Actin Rabbit mAb at 1:1000. Secondary antibody: HRP Goat Anti-Rabbit IgG (H+L) at 1:5000. Lysates/proteins: 30ug per lane. Blocking buffer: 5% non-fat dry milk in TBST. Detection: ECL Enhanced Kit. Exposure time: 120s.

实验步骤

访问官网浏览详情: www.ablybio.cn