

LYRIC Rabbit mAb

货号: **AYM28764**

产品信息

反应	Human,Mouse,Rat
宿主	Rabbit
克隆性	Monoclonal
预测反应	
应用	WB IHC IF/ICC
推荐浓度	WB: 1:500 - 1:2000 IHC: 1:50 - 1:200 IF/ICC: 1:50 - 1:200
理论分子量	63kDa
实测分子量	75kDa
形式	Liquid
保存条件	Store at -20°C. Avoid freeze / thaw cycles. Buffer: PBS with 0.75% BSA,50% glycerol,pH7.3.
偶联物	Unconjugated
阳性对照	PC-12
细胞定位	Cell junction,Cytoplasm,Endoplasmic reticulum membrane,Nucleus,Nucleus membrane,Single-pass membrane protein,nucleolus,perinuclear region,tight junction
纯化	Affinity purification

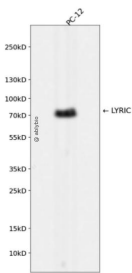
抗原信息

抗原信息	Recombinant fusion protein corresponding to Human LYRIC.
序列	MAARSWQDELAQQAEEGSARLREMLSVGLGFLRTELGLDLGLEPKRYPGWVILVGTGALGLLLLFLLGYGWAAACAGAR KKRRSPPRKREEAAVPAAPDDLALLKNLRSEEQKKKNRKLSEKPKPNGRTVEVAEGEAVRTPQSVTAKQPPEIDKKNE KSKKNKKKSKSDAKAVQNSSRHDGKEVDEGAWETKISHREKRQQRKRDKVLTDGSLDSTIPGIENTITVTTEQLTTASF PVGSKKNKGDSHLNVQVSNF

靶点信息

研究背景	Downregulates SLC1A2/EAAT2 promoter activity when expressed ectopically. Activates the nuclear factor kappa-B (NF-kappa-B transcription factor. Promotes anchorage-independent growth of immortalized melanocytes and astrocytes which is a key component in tumor cell expansion. Promotes lung metastasis and also has an effect on bone and brain metastasis, possibly by enhancing the seeding of tumor cells to the target organ endothelium. Induces chemoresistance.
基因ID	92140
基因名	MTDH
Swiss	Q86UE4
别名	MTDH;3D3;AEG-1;AEG1;LYRIC;LYRIC/3D3

产品验证



Western blot analysis of LYRIC expressed in PC-12 using LYRIC Rabbit mAb at 1:1000. Secondary antibody : HRP Goat Anti-Rabbit IgG (H+L) at 1:5000. Lysates/proteins: 30ug per lane. Blocking buffer: 5% non-fat dry milk in TBST. Detection: ECL Enhanced Kit. Exposure time: 120s.

实验步骤

访问官网浏览详情: www.ablybio.cn