

SUOX Rabbit mAb

货号: **AYM28760**

产品信息

反应	Human,Rat
宿主	Rabbit
克隆性	Monoclonal
预测反应	
应用	WB IHC
推荐浓度	WB: 1:500 - 1:2000 IHC: 1:50 - 1:200
理论分子量	60kDa
实测分子量	60kDa
形式	Liquid
保存条件	Store at -20°C. Avoid freeze / thaw cycles. Buffer: PBS with 0.75% BSA,50% glycerol,pH7.3.
偶联物	Unconjugated
阳性对照	Rat kidney
细胞定位	Mitochondrion intermembrane space
纯化	Affinity purification

抗原信息

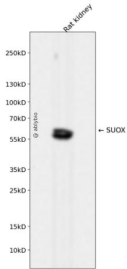
抗原信息	Recombinant fusion protein corresponding to Human SUOX.
序列	IWVTLGSEVFDVTEFVDLHPGGPSKLMMLAAGGPLEPFWALYAVHNQSHVRELLAQYKIGELNPEDKVAPT VETSDPYADD PVRHPALKVNSQRPFNAEPPP

靶点信息

研究背景	Sulfite oxidase is a homodimeric protein localized to the intermembrane space of mitochondria. Each sub unit contains a heme domain and a molybdopterin-binding domain. The enzyme catalyzes the oxidation of sulfite to sulfate, the final reaction in the oxidative degradation of the sulfur amino acids cysteine and methionine. Sulfite oxidase deficiency results in neurological abnormalities which are often fatal at an early age. Alternative splicing results in multiple transcript variants encoding identical proteins.
基因ID	6821

基因名	SUOX
Swiss	P51687
别名	SUOX; sulfite oxidase

产品验证



Western blot analysis of SUOX expressed in Rat kidney using SUOX Rabbit mAb at 1:1000. Secondary antibody: HRP Goat Anti-Rabbit IgG (H+L) at 1:5000. Lysates/proteins: 30ug per lane. Blocking buffer: 5% non-fat dry milk in TBST. Detection: ECL Enhanced Kit. Exposure time: 120s.

实验步骤

访问官网浏览详情: www.ablybio.cn