

Lipoprotein lipase Rabbit mAb

货号: **AYM28759**

产品信息

反应	Human
宿主	Rabbit
克隆性	Monoclonal
预测反应	
应用	WB IHC
推荐浓度	WB: 1:500 - 1:2000 IHC: 1:50 - 1:200
理论分子量	53kDa
实测分子量	53kDa
形式	Liquid
保存条件	Store at -20°C. Avoid freeze / thaw cycles. Buffer: PBS with 0.75% BSA, 50% glycerol, pH7.3.
偶联物	Unconjugated
阳性对照	HepG2, Mouse brain, Rat brain
细胞定位	Cell membrane, GPI-anchor, Lipid-anchor, Secreted
纯化	Affinity purification

抗原信息

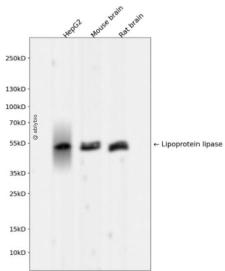
抗原信息	Recombinant fusion protein corresponding to Human Lipoprotein lipase.
序列	SAGYTKLVGQDVARFINWMEEEFNYPLDNVHLLGYSLGAAHAAGIAGSLTNKKVNRTGLDPAGPNFEYAEAPSRLLSPDDA DFVDVLHTFTRGSPGRSIGIQKPVGHVDIYPNGGTFQPGCNIGEAIRVIAERGLGDVDQLVKCSHERSIHLFIDSLLEENPS KAYRCSSKEAFEKGLCLSCRKNRCNNLGYEINKVRAKRSSKMYLKTRSQMPYKVFHYQVKIHFSGTESEHTNQAFEISLY GTVAESENIPFTLPEVSTNKTYSLIYTEVDIGELMLKWKSDSYFSWSDWWSSPGFAIQIRVKAGETQKKVIFCSREK VSHLQK GKAPAVFKCHDKSLNKKSG

靶点信息

研究背景	LPL encodes lipoprotein lipase, which is expressed in heart, muscle, and adipose tissue. LPL functions as a homodimer, and has the dual functions of triglyceride hydrolase and ligand/bridging factor for receptor-mediated lipoprotein uptake. Severe mutations that cause LPL deficiency result in type I hyperlipoproteinemia, while less extreme mutations in LPL are linked to many disorders of lipoprotein metabolism.
------	--

基因ID	4023
基因名	LPL
Swiss	P06858
别名	LPL;HDLCQ11;LIPD

产品验证



Western blot analysis of Lipoprotein lipase expressed in HepG2, Mouse brain, Rat brain using Lipoprotein lipase Rabbit mAb at 1:1000. Secondary antibody: HRP Goat Anti-Rabbit IgG (H+L) at 1:5000. Lysates/proteins: 30ug per lane. Blocking buffer: 5% non-fat dry milk in TBST. Detection: ECL Enhanced Kit. Exposure time: 120s.

实验步骤

访问官网浏览详情: www.ablybio.cn