

SLC25A12 Rabbit mAb

货号: **AYM28751**

产品信息

反应	Human,Mouse,Rat
宿主	Rabbit
克隆性	Monoclonal
预测反应	
应用	WB IP
推荐浓度	WB: 1:500 - 1:2000 IP: 1:20 - 1:50
理论分子量	62kDa/74kDa
实测分子量	72kDa
形式	Liquid
保存条件	Store at -20°C. Avoid freeze / thaw cycles. Buffer: PBS with 0.75% BSA,50% glycerol,pH7.3.
偶联物	Unconjugated
阳性对照	U-251MG,U2OS,Mouse brain,Mouse testis,Mouse skeletal muscle,Rat brain,Rat skeletal muscle,Rat heart
细胞定位	Mitochondrion inner membrane,Multi-pass membrane protein
纯化	Affinity purification

抗原信息

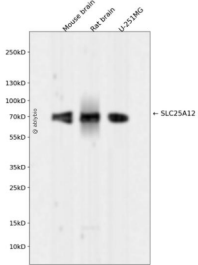
抗原信息	Recombinant fusion protein corresponding to Human SLC25A12.
序列	

靶点信息

研究背景	This gene encodes a calcium-binding mitochondrial carrier protein. The encoded protein localizes to the mitochondria and is involved in the exchange of aspartate for glutamate across the inner mitochondrial membrane. Polymorphisms in this gene may be associated with autism, and mutations in this gene may also be a cause of global cerebral hypomyelination. Alternatively spliced transcript variants have been observed for this gene.
基因ID	8604

基因名	SLC25A12
Swiss	O75746
别名	SLC25A12;AGC1;ARALAR;EIEE39

产品验证



Western blot analysis of SLC25A12 expressed in Mouse brain,Rat brain,U-251MG using SLC25A12 Rabbit mAb at 1:1000. Secondary antibody: HRP Goat Anti-Rabbit IgG (H+L) at 1:5000. Lysates/proteins: 30ug per lane. Blocking buffer: 5% non-fat dry milk in TBST. Detection: ECL Enhanced Kit. Exposure time: 120s.

实验步骤

访问官网浏览详情: www.ablybio.cn