

ATP7b Rabbit mAb

货号: **AYM28742**

产品信息

反应	Human
宿主	Rabbit
克隆性	Monoclonal
预测反应	
应用	WB IF/ICC FC
推荐浓度	WB: 1:500 - 1:2000 IF/ICC: 1:50 - 1:200 FC: 1:20 - 1:50
理论分子量	133kDa/145kDa/155kDa/157kDa
实测分子量	157kDa
形式	Liquid
保存条件	Store at -20°C. Avoid freeze / thaw cycles. Buffer: PBS with 0.75% BSA,50% glycerol,pH7.3.
偶联物	Unconjugated
阳性对照	Mouse liver,Rat liver
细胞定位	Cytoplasm,Golgi apparatus,Golgi apparatus membrane,Mitochondrion,Multi-pass membrane protein,Multi-pass membrane protein,trans-Golgi network membrane
纯化	Affinity purification

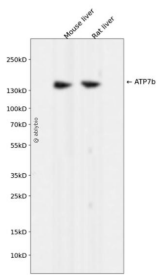
抗原信息

抗原信息	Recombinant fusion protein corresponding to Human ATP7b.
序列	SDAMTDHEMKGQTAILVAIDGVLGCMIAIADAVKQEAALAVHTLQSMGVDVVLITGDNRKRTARAIATQVGINKVFAEVLPS HKVAKVQELQNKGGKVMVGDGVNDSPALAQADMGVAIGTGTDAIEAADVVLIRNDLLDVVASIHLSKRTVRRIRINLVL ALIYNLVGIPIAAGVFMPIGIVLQPWMSGSAAMAASSVSVLSSLQLKCYKPDRLERYEAQAHGHMKPLTASQVSVHIGMDD RWRDSPRATPWDQVSYVSQVSLSSLTSDKPSRHSAAADDDGDKWSLLNNGRDEEQYI

靶点信息

研究背景	This gene is a member of the P-type cation transport ATPase family and encodes a protein with several membrane-spanning domains, an ATPase consensus sequence, a hinge domain, a phosphorylation site, and at least 2 putative copper-binding sites. This protein functions as a monomer, exporting copper out of the cells, such as the efflux of hepatic copper into the bile. Alternate transcriptional splice variants, encoding different isoforms with distinct cellular localizations, have been characterized. Mutations in this gene have been associated with Wilson disease (WD).
基因ID	540
基因名	ATP7B
Swiss	P35670
别名	ATP7B;PWD;WC1;WD;WND

产品验证



Western blot analysis of ATP7b expressed in Mouse liver, Rat liver using ATP7b Rabbit mAb at 1:1000. Secondary antibody: HRP Goat Anti-Rabbit IgG (H+L) at 1:5000. Lysates/proteins: 30ug per lane. Blocking buffer: 5% non-fat dry milk in TBST. Detection: ECL Enhanced Kit. Exposure time: 120s.

实验步骤

访问官网浏览详情: www.ablybio.cn