

TROY Rabbit mAb

货号: **AYM28741**

产品信息

反应	Human,Mouse,Rat
宿主	Rabbit
克隆性	Monoclonal
预测反应	
应用	WB IHC FC
推荐浓度	WB: 1:500 - 1:2000 IHC: 1:50 - 1:200 FC: 1:20 - 1:50
理论分子量	46kDa
实测分子量	46kDa
形式	Liquid
保存条件	Store at -20°C. Avoid freeze / thaw cycles. Buffer: PBS with 0.75% BSA,50% glycerol,pH7.3.
偶联物	Unconjugated
阳性对照	22Rv1,Raji,U-251MG,Mouse lung,Mouse brain,Mouse spleen,Rat lung,Rat brain
细胞定位	Membrane,Single-pass type I membrane protein
纯化	Affinity purification

抗原信息

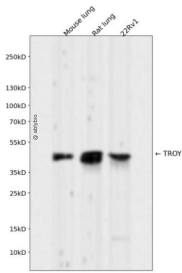
抗原信息	Recombinant fusion protein corresponding to Human TROY.
序列	RFQKANCSATSDAICGDCLPGFYRKTCLVGFQDMECVPCGDPPPPYEPHCASKVNLVKIASTASSPRDTALAAVICSALATVLLALLILCVIYCKRQFMEK

靶点信息

研究背景	The protein encoded by this gene is a member of the TNF-receptor superfamily. This receptor is highly expressed during embryonic development. It has been shown to interact with TRAF family members, and to activate JNK signaling pathway when overexpressed in cells. This receptor is capable of inducing apoptosis by a caspase-independent mechanism, and it is thought to play an essential role in embryonic development. Alternatively spliced transcript variants encoding distinct isoforms have been described.
------	---

基因ID	55504
基因名	TNFRSF19
Swiss	Q9NS68
别名	TNFRSF19; TAJ; TAJ-alpha; TRADE; TROY; TNF receptor superfamily member 19

产品验证



Western blot analysis of TROY expressed in Mouse lung,Rat lung,22Rv1 using TROY Rabbit mAb at 1:10 00. Secondary antibody: HRP Goat Anti-Rabbit IgG (H+L) at 1:5000. Lysates/proteins: 30ug per lane. Blocking buffer: 5% non-fat dry milk in TBST. Detection: ECL Enhanced Kit. Exposure time: 120s.

实验步骤

访问官网浏览详情: www.ablybio.cn