

# PI3 Kinase Class 3 Rabbit mAb

货号: **AYM28735**

## 产品信息

反应	Human,Mouse,Rat
宿主	Rabbit
克隆性	Monoclonal
预测反应	
应用	WB IHC
推荐浓度	<b>WB:</b> 1:500 - 1:2000 <b>IHC:</b> 1:50 - 1:200
理论分子量	101kDa
实测分子量	100kDa
形式	Liquid
保存条件	Store at -20°C. Avoid freeze / thaw cycles. Buffer: PBS with 0.75% BSA,50% glycerol,pH7.3.
偶联物	Unconjugated
阳性对照	293T,C6,Mouse lung,Mouse brain,Rat brain
细胞定位	Cytoplasmic vesicle,Late endosome,Midbody,autophagosome
纯化	Affinity purification

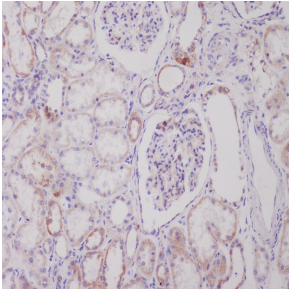
## 抗原信息

抗原信息	Recombinant fusion protein corresponding to Human PI3 Kinase Class 3.
序列	FGKYGMFRQGMHDLKVWPVNEADGSEPTKTPGRTSSTLSEDMQMSRLAKLTKAHRQGHMVKVDWLDRLTFREIEMINES EKRSSNFMYLMVEFRCVKCDDKEYGIVYYEKDGEDESSPILTSFELVKVPDPQMSMENLVESKHHKLARSLRSGPSDHDLK PNAATRDQLNIIIVSYPTKQLTYEEQDLVWKFRRYLTNQEALTKFLKCVNWDLPQEAKQALELLGKWKPMDVEDSLELLS SHYTNPTVRRYAVARLRQADDEDLLMYLLQLVQALKYENFDDIK

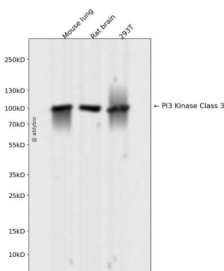
## 靶点信息

研究背景	Catalytic subunit of the PI3K complex that mediates formation of phosphatidylinositol 3-phosphate; different complex forms are believed to play a role in multiple membrane trafficking pathways: PI3KC3-C1 is involved in initiation of autophagosomes and PI3KC3-C2 in maturation of autophagosomes and endocytosis. As part of PI3KC3-C1, promotes endoplasmic reticulum membrane curvature formation prior to vesicle budding. Involved in regulation of degradative endocytic trafficking and required for the abscission step in cytokinesis, probably in the context of PI3KC3-C2. Involved in the transport of lysosomal enzyme precursors to lysosomes. Required for transport from early to late endosomes (By similarity).
基因ID	5289
基因名	PIK3C3
Swiss	Q8NEB9
别名	PIK3C3;VPS34;Vps34;hVps34

## 产品验证



Immunohistochemical analysis of paraffin-embedded human kidney, using PI 3 Kinase Class 3 Antibody.



Western blot analysis of PI3 Kinase Class 3 expressed in Mouse lung, Rat brain, 293T using PI3 Kinase Class 3 Rabbit mAb at 1:1000. Secondary antibody: HRP Goat Anti-Rabbit IgG (H+L) at 1:5000. Lysates/proteins: 30ug per lane. Blocking buffer: 5% non-fat dry milk in TBST. Detection: ECL Enhanced Kit. Exposure time: 120s.

## 实验步骤

访问官网浏览详情: [www.ablybio.cn](http://www.ablybio.cn)