

Salivary alpha amylase Rabbit mAb

货号: **AYM28726**

产品信息

反应	Human
宿主	Rabbit
克隆性	Monoclonal
预测反应	
应用	WB
推荐浓度	WB: 1:500 - 1:2000
理论分子量	57kDa
实测分子量	58kDa
形式	Liquid
保存条件	Store at -20°C. Avoid freeze / thaw cycles. Buffer: PBS with 0.75% BSA,50% glycerol,pH7.3.
偶联物	Unconjugated
阳性对照	Mouse liver
细胞定位	Secreted
纯化	Affinity purification

抗原信息

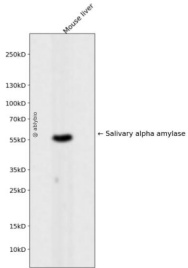
抗原信息	Recombinant fusion protein corresponding to Human Salivary alpha amylase.
序列	QYSSNTQQGRTSIVHLFEWRWVDIALECERYLAPKGGVQVSPNENVAIHNPFRPWERYQPVSYKLCTRSGNEDEF RNMVTRCANNVGVRIYVDAVINHMCNAVSAGTSSTCGSYFNPGSRDFPAVPYSGWDFNDGKCKTGSGDIENYNDATQ VRDCRLSGLLDLALGKDYVRSKIAEYMNH

靶点信息

研究背景	Amylases are secreted proteins that hydrolyze 1,4-alpha-glucoside bonds in oligosaccharides and polysaccharides, and thus catalyze the first step in digestion of dietary starch and glycogen. The human genome has a cluster of several amylase genes that are expressed at high levels in either salivary gland or pancreas. This gene encodes an amylase isoenzyme produced by the salivary gland. Alternative splicing results in multiple transcript variants encoding the same protein.
基因ID	276

基因名	
Swiss	P04745
别名	AMY1A;AMY1

产品验证



Western blot analysis of Salivary alpha amylase expressed in Mouse liver using Salivary alpha amylase Rabbit mAb at 1:1000. Secondary antibody: HRP Goat Anti-Rabbit IgG (H+L) at 1:5000. Lysates/protein s: 30ug per lane. Blocking buffer: 5% non-fat dry milk in TBST. Detection: ECL Enhanced Kit. Exposure time: 120s.

实验步骤

访问官网浏览详情: www.ablybio.cn