

Dysferlin (Romeo) Rabbit mAb

货号: **AYM28700**

产品信息

反应	Human,Mouse
宿主	Rabbit
克隆性	Monoclonal
预测反应	
应用	WB IHC IF/ICC
推荐浓度	WB: 1:500 - 1:2000 IHC: 1:50 - 1:200 IF/ICC: 1:50 - 1:200
理论分子量	280kDa
实测分子量	280kDa
形式	Liquid
保存条件	Store at -20°C. Avoid freeze / thaw cycles. Buffer: PBS with 0.75% BSA,50% glycerol,pH7.3.
偶联物	Unconjugated
阳性对照	RD
细胞定位	cytoplasmic vesicle,early endosome,endosome,extracellular exosome,late endosome,plasma membrane, T-tubule
纯化	Affinity purification

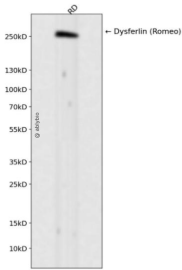
抗原信息

抗原信息	Recombinant fusion protein corresponding to Human Dysferlin (Romeo).
序列	FEWDLKGIPLDQGSELHVVVKDHETMGRNRFLEAKVPLREVLATPSLSASFNAPLLDTKKQPTGASLVLQVSYTPLPGAV PLFPPPTPLESPTLPDLVDV

靶点信息

研究背景	The protein encoded by this gene belongs to the ferlin family and is a skeletal muscle protein found associated with the sarcolemma. It is involved in muscle contraction and contains C2 domains that play a role in calcium-mediated membrane fusion events, suggesting that it may be involved in membrane regeneration and repair. In addition, the protein encoded by this gene binds caveolin-3, a skeletal muscle membrane protein which is important in the formation of caveolae. Specific mutations in this gene have been shown to cause autosomal recessive limb girdle muscular dystrophy type 2B (LGMD2B) as well as Miyoshi myopathy. Alternative splicing results in multiple transcript variants. [provided by RefSeq, Aug 2008]
基因ID	8291
基因名	DYSF
Swiss	O75923
别名	FER1L1; LGMD2B; MMD1

产品验证



Western blot analysis of Dysferlin (Romeo) expressed in RD using Dysferlin (Romeo) Rabbit mAb at 1:1000. Secondary antibody: HRP Goat Anti-Rabbit IgG (H+L) at 1:5000. Lysates/proteins: 30ug per lane. Blocking buffer: 5% non-fat dry milk in TBST. Detection: ECL Enhanced Kit. Exposure time: 120s.

实验步骤

访问官网浏览详情: www.ablybio.cn