

NUDC Rabbit mAb

货号: **AYM28699**

产品信息

反应	Human,Mouse,Rat
宿主	Rabbit
克隆性	Monoclonal
预测反应	
应用	WB IHC IF/ICC IP FC
推荐浓度	WB: 1:500 - 1:2000 IHC: 1:50 - 1:200 IF/ICC: 1:50 - 1:200 IP: 1:20 - 1:50 FC: 1:20 - 1:50
理论分子量	42kDa
实测分子量	42kDa
形式	Liquid
保存条件	Store at -20°C. Avoid freeze / thaw cycles. Buffer: PBS with 0.75% BSA,50% glycerol,pH7.3.
偶联物	Unconjugated
阳性对照	HeLa,293T,HepG2,A-549,Mouse lung,Mouse brain,Rat brain
细胞定位	Cytoplasm,Nucleus,cytoskeleton
纯化	Affinity purification

抗原信息

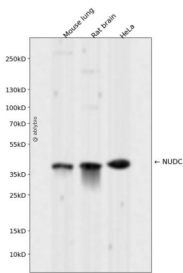
抗原信息	Recombinant fusion protein corresponding to Human NUDC.
序列	SWLIEDGKVVTVHLEKINKMEWWSRLVSSDPEINTKKINPENSKLSLDLSETRSMVEKMMYDQRQKSMGLPTSDEQKKQ EILKKFMDQHPEMDFSKAKFN

靶点信息

研究背景	This gene encodes a nuclear distribution protein that plays an essential role in mitosis and cytokinesis. The encoded protein is involved in spindle formation during mitosis and in microtubule organization during cytokinesis. Pseudogenes of this gene are found on chromosome 2. [provided by RefSeq, Feb 2012]
------	--

基因ID	10726
基因名	NUDC
Swiss	Q9Y266
别名	HNUDC; MNUDC; NPD011

产品验证



Western blot analysis of NUDC expressed in Mouse lung, Rat brain, HeLa using NUDC Rabbit mAb at 1:1000. Secondary antibody: HRP Goat Anti-Rabbit IgG (H+L) at 1:5000. Lysates/proteins: 30ug per lane. Blocking buffer: 5% non-fat dry milk in TBST. Detection: ECL Enhanced Kit. Exposure time: 120s.

实验步骤

访问官网浏览详情: www.ablybio.cn