

# ISG15 Rabbit mAb

货号: **AYM28696**

## 产品信息

反应	Human
宿主	Rabbit
克隆性	Monoclonal
预测反应	
应用	WB IF/ICC
推荐浓度	<b>WB:</b> 1:500 - 1:2000 <b>IF/ICC:</b> 1:50 - 1:200
理论分子量	17kDa
实测分子量	17kDa
形式	Liquid
保存条件	Store at -20°C. Avoid freeze / thaw cycles. Buffer: PBS with 0.75% BSA, 50% glycerol, pH7.3.
偶联物	Unconjugated
阳性对照	Mouse spleen, Rat lung
细胞定位	Cytoplasm, Secreted
纯化	Affinity purification

## 抗原信息

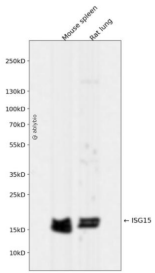
抗原信息	Recombinant fusion protein corresponding to Human ISG15.
序列	MGWDLTVKMLAGNEFQVSLSSSMSVSELKAQITQKIGVHAFQQLAVHPSGVALQDRVPLASQGLGPGSTVLLVVDKC DEPLSILVRNKNKGRSSTYEVRLTQTVAHLKQVSGLEGVQDDLFWLTFFEGKPLEDQLPLGEYGLKPLSTVFMNLRRLRGGG TEPGGRS

## 靶点信息

研究背景	The protein encoded by this gene is a ubiquitin-like protein that is conjugated to intracellular target proteins upon activation by interferon-alpha and interferon-beta. Several functions have been ascribed to the encoded protein, including chemotactic activity towards neutrophils, direction of ligated target proteins to intermediate filaments, cell-to-cell signaling, and antiviral activity during viral infections. While conjugates of this protein have been found to be noncovalently attached to intermediate filaments, this protein is sometimes secreted. [provided by RefSeq, Dec 2012]
------	--

基因ID	9636
基因名	ISG15
Swiss	P05161
别名	G1P2; IFI15; IMD38; IP17; UCRP; hUCRP

## 产品验证



Western blot analysis of ISG15 expressed in Mouse spleen, Rat lung using ISG15 Rabbit mAb at 1:1000. Secondary antibody: HRP Goat Anti-Rabbit IgG (H+L) at 1:5000. Lysates/proteins: 30ug per lane. Blocking buffer: 5% non-fat dry milk in TBST. Detection: ECL Enhanced Kit. Exposure time: 120s.

## 实验步骤

访问官网浏览详情: [www.ablybio.cn](http://www.ablybio.cn)