

COPA Rabbit mAb

货号: **AYM28695**

产品信息

反应	Human,Mouse,Rat
宿主	Rabbit
克隆性	Monoclonal
预测反应	
应用	WB IHC
推荐浓度	WB: 1:500 - 1:2000 IHC: 1:50 - 1:200
理论分子量	138kDa
实测分子量	138kDa
形式	Liquid
保存条件	Store at -20°C. Avoid freeze / thaw cycles. Buffer: PBS with 0.75% BSA,50% glycerol,pH7.3.
偶联物	Unconjugated
阳性对照	HeLa,HT-29,MCF7,Mouse lung,Rat brain
细胞定位	COPI vesicle coat,cytoplasm,cytosol,extracellular exosome,extracellular space,transport vesicle
纯化	Affinity purification

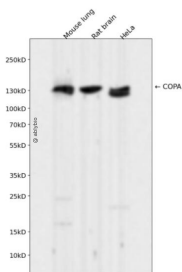
抗原信息

抗原信息	Recombinant fusion protein corresponding to Human COPA.
序列	MLTKFETKSARVKGLSFHPKRPWILTSLHNGVIQLWDYRMCTLIDKFDEHDGPVRGBDFHKQQLFVSGGDDYKIKVWNY KLRRCLFTLLGHLDYIRTTF

靶点信息

研究背景	In eukaryotic cells, protein transport between the endoplasmic reticulum and Golgi compartments is mediated in part by non-clathrin-coated vesicular coat proteins (COPs). Seven coat proteins have been identified, and they represent subunits of a complex known as coatomer. The subunits are designated alpha-COP, beta-COP, beta-prime-COP, gamma-COP, delta-COP, epsilon-COP, and zeta-COP. The alpha-COP, encoded by COPA, shares high sequence similarity with RET1P, the alpha subunit of the coatomer complex in yeast. Also, the N-terminal 25 amino acids of alpha-COP encode the bioactive peptide, xenin, which stimulates exocrine pancreatic secretion and may act as a gastrointestinal hormone. Alternative splicing results in multiple splice forms encoding distinct isoforms. [provided by RefSeq, Jul 2008]
基因ID	1314
基因名	COPA
Swiss	P53621
别名	AILJK; HEP-COP

产品验证



Western blot analysis of COPA expressed in Mouse lung, Rat brain, HeLa using COPA Rabbit mAb at 1:1000. Secondary antibody: HRP Goat Anti-Rabbit IgG (H+L) at 1:5000. Lysates/proteins: 30ug per lane. Blocking buffer: 5% non-fat dry milk in TBST. Detection: ECL Enhanced Kit. Exposure time: 120s.

实验步骤

访问官网浏览详情: www.ablybio.cn