

PSMA2 Rabbit mAb

货号: **AYM28675**

产品信息

| | |
|-------|--|
| 反应 | Human,Mouse,Rat |
| 宿主 | Rabbit |
| 克隆性 | Monoclonal |
| 预测反应 | |
| 应用 | WB IHC IF/ICC FC |
| 推荐浓度 | WB: 1:500 - 1:2000 IHC: 1:50 - 1:200 IF/ICC: 1:50 - 1:200 FC: 1:20 - 1:50 |
| 理论分子量 | 25kDa |
| 实测分子量 | 25kDa |
| 形式 | Liquid |
| 保存条件 | Store at -20°C. Avoid freeze / thaw cycles. Buffer: PBS with 0.75% BSA,50% glycerol,pH7.3. |
| 偶联物 | Unconjugated |
| 阳性对照 | 293T,Jurkat,U-251MG,HeLa,NIH/3T3,22Rv1,Raji,Mouse brain,Mouse kidney |
| 细胞定位 | Cytoplasm,Nucleus,P-body |
| 纯化 | Affinity purification |

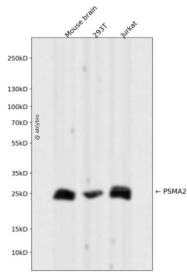
抗原信息

| | |
|------|---|
| 抗原信息 | Recombinant fusion protein corresponding to Human PSMA2. |
| 序列 | MAERGYSFSLTTFSPSGKLVQIEYALAAVAGGAPSVGIKAANGVVLATEKKQKSILYDERSVHKVEPITKHIGLVYSGMGPD YRVLVHRARKLAQQYYLVYQEPIPTAQLVQRVASVMQEYTSGGVRFPGVSLICGWNEGRPYLFQSDPSGAYFAWKATA MGKNYVNGKTFLEKRYNEDLEDAIHTAILTLKESFEGQMTEDNIEVGICNEAGFRRLTPTEVKDYLAIA |

靶点信息

| | |
|-------|--|
| 研究背景 | The proteasome is a multicatalytic proteinase complex with a highly ordered ring-shaped 20S core structure. The core structure is composed of 4 rings of 28 non-identical subunits; 2 rings are composed of 7 alpha subunits and 2 rings are composed of 7 beta subunits. Proteasomes are distributed throughout eukaryotic cells at a high concentration and cleave peptides in an ATP/ubiquitin-dependent process in a non-lysosomal pathway. An essential function of a modified proteasome, the immunoproteasome, is the processing of class I MHC peptides. This gene encodes a member of the peptidase T1A family, that is a 20S core alpha subunit. |
| 基因ID | 5683 |
| 基因名 | PSMA2 |
| Swiss | P25787 |
| 别名 | PSMA2;HC3;MU;PMSA2;PSC2 |

产品验证



Western blot analysis of PSMA2 expressed in Mouse brain,293T,Jurkat using PSMA2 Rabbit mAb at 1:1000. Secondary antibody: HRP Goat Anti-Rabbit IgG (H+L) at 1:5000. Lysates/proteins: 30ug per lane. Blocking buffer: 5% non-fat dry milk in TBST. Detection: ECL Enhanced Kit. Exposure time: 120s.

实验步骤

访问官网浏览详情: www.ablybio.cn