

ANPRB Rabbit mAb

货号: **AYM28663**

产品信息

反应	Human,Mouse,Rat
宿主	Rabbit
克隆性	Monoclonal
预测反应	
应用	WB
推荐浓度	WB: 1:500 - 1:2000
理论分子量	117kDa
实测分子量	117kDa
形式	Liquid
保存条件	Store at -20°C. Avoid freeze / thaw cycles. Buffer: PBS with 0.75% BSA,50% glycerol,pH7.3.
偶联物	Unconjugated
阳性对照	Mouse lung,Mouse spleen
细胞定位	Membrane,Single-pass type I membrane protein
纯化	Affinity purification

抗原信息

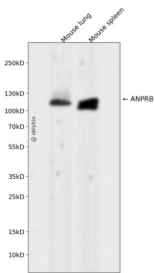
抗原信息	Recombinant fusion protein corresponding to Human ANPRB.
序列	NLLLRMEQYANNLEKLVEERTQAYLEEKRKAEALLYQILPHSVAEQLKRGETVQAEAFDSVTIYFSDIVGFTALSAESTPMQV VTLLNDLYTCFDAIIDNF

靶点信息

研究背景	This gene encodes natriuretic peptide receptor B, one of two integral membrane receptors for natriuretic peptides. Both NPR1 and NPR2 contain five functional domains: an extracellular ligand-binding domain, a single membrane-spanning region, and intracellularly a protein kinase homology domain, a helical hinge region involved in oligomerization, and a carboxyl-terminal guanylyl cyclase catalytic domain. The protein is the primary receptor for C-type natriuretic peptide (CNP), which upon ligand binding exhibits greatly increased guanylyl cyclase activity. Mutations in this gene are the cause of acromesomelic dysplasia Maroteaux type.
------	--

基因ID	4882
基因名	NPR2
Swiss	P20594
别名	NPR2; AMDM; ANPRB; ANPb; ECDM; GUC2B; GUCY2B; NPRB; NPRBi; SNSK; natriuretic peptide receptor 2

产品验证



Western blot analysis of ANPRB expressed in Mouse lung, Mouse spleen using ANPRB Rabbit mAb at 1:1000. Secondary antibody: HRP Goat Anti-Rabbit IgG (H+L) at 1:5000. Lysates/proteins: 30ug per lane. Blocking buffer: 5% non-fat dry milk in TBST. Detection: ECL Enhanced Kit. Exposure time: 120s.

实验步骤

访问官网浏览详情: www.ablybio.cn