

SR protein repeat Rabbit mAb

货号: **AYM28654**

产品信息

反应	Human
宿主	Rabbit
克隆性	Monoclonal
预测反应	
应用	WB IHC
推荐浓度	WB: 1:500 - 1:2000 IHC: 1:50 - 1:200
理论分子量	38-45kDa
实测分子量	38-45kDa
形式	Liquid
保存条件	Store at -20°C. Avoid freeze / thaw cycles. Buffer: PBS with 0.75% BSA,50% glycerol,pH7.3.
偶联物	Unconjugated
阳性对照	SKOV3,A-431,Mouse testis,Mouse thymus,Rat liver
细胞定位	Nucleus,Nucleus speckle
纯化	Affinity purification

抗原信息

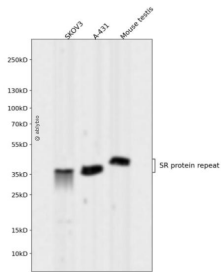
抗原信息	Recombinant fusion protein corresponding to Human SR protein repeat.
序列	DKYGPPVRTEYRLIVENLSSRCSWQDLKDFMRQAGEVTYADAHKERTNEGVIEFRSYSDMKRALDKLDGTEINGRNIRLIE DKPRTSHRRSYSGSRSRSR

靶点信息

研究背景	The protein encoded by this gene is involved in mRNA splicing and may play a role in the determination of alternative splicing. The encoded nuclear protein belongs to the splicing factor SR family and has been shown to bind with and modulate another member of the family, SFRS12. Alternative splicing results in multiple transcript variants. In addition, two pseudogenes, one on chromosome 17 and the other on the X chromosome, have been found for this gene.
基因ID	6431

基因名	SRSF6
Swiss	Q13247
别名	SRSF6; B52; HEL-S-91; SFRS6; SRP55; serine/arginine-rich splicing factor 6

产品验证



Western blot analysis of SR protein repeat expressed in SKOV3,A-431,Mouse testis using SR protein repeat Rabbit mAb at 1:1000. Secondary antibody: HRP Goat Anti-Rabbit IgG (H+L) at 1:5000. Lysates/proteins: 30ug per lane. Blocking buffer: 5% non-fat dry milk in TBST. Detection: ECL Enhanced Kit. Exposure time: 120s.

实验步骤

访问官网浏览详情: www.ablybio.cn