

# Musashi 1 / Msi1 Rabbit mAb

货号: **AYM28649**

## 产品信息

反应	Human
宿主	Rabbit
克隆性	Monoclonal
预测反应	
应用	WB IHC IF/ICC IP FC
推荐浓度	<b>WB:</b> 1:500 - 1:2000 <b>IHC:</b> 1:50 - 1:200 <b>IF/ICC:</b> 1:50 - 1:200 <b>IP:</b> 1:20 - 1:50 <b>FC:</b> 1:20 - 1:50
理论分子量	39kDa
实测分子量	39kDa
形式	Liquid
保存条件	Store at -20°C. Avoid freeze / thaw cycles. Buffer: PBS with 0.75% BSA,50% glycerol,pH7.3.
偶联物	Unconjugated
阳性对照	SH-SY5Y,Mouse brain
细胞定位	Cytoplasm,Nucleus
纯化	Affinity purification

## 抗原信息

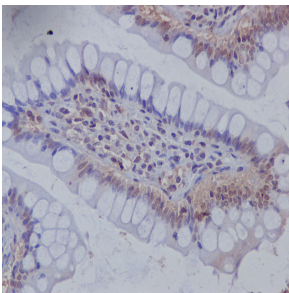
抗原信息	Recombinant fusion protein corresponding to Human Musashi 1 / Msi1 .
序列	METDAPQPGLASPDSPHDPCKMFIGGLSWQTTQEGLREYFGQFGEVKECLVMRDPLTKRSRGFGFVTFMDQAGVDKVL AQRHELDSKTIDPKVAFPRRA

## 靶点信息

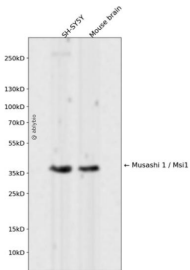
研究背景	This gene encodes a protein containing two conserved tandem RNA recognition motifs. Similar proteins in other species function as RNA-binding proteins and play central roles in posttranscriptional gene regulation. Expression of this gene has been correlated with the grade of the malignancy and proliferative activity in gliomas and melanomas. A pseudogene for this gene is located on chromosome 11q13. [provided by RefSeq, Jul 2008]
------	---

基因ID	4440
基因名	MSI1
Swiss	O43347
别名	MSI1; musashi RNA binding protein 1

## 产品验证



Immunohistochemical analysis of paraffin-embedded human colon, using Musashi 1 Antibody .



Western blot analysis of Musashi 1 / Msi1 expressed in SH-SY5Y, Mouse brain using Musashi 1 / Msi1 Rabbit mAb at 1:1000. Secondary antibody: HRP Goat Anti-Rabbit IgG (H+L) at 1:5000. Lysates/proteins: 30ug per lane. Blocking buffer: 5% non-fat dry milk in TBST. Detection: ECL Enhanced Kit. Exposure time: 120s.

## 实验步骤

访问官网浏览详情: [www.ablybio.cn](http://www.ablybio.cn)