

CLASP1 Rabbit mAb

货号: **AYM28648**

产品信息

| | |
|-------|---|
| 反应 | Human,Mouse,Rat |
| 宿主 | Rabbit |
| 克隆性 | Monoclonal |
| 预测反应 | |
| 应用 | WB IHC IF/ICC FC |
| 推荐浓度 | WB: 1:500 - 1:2000 IHC: 1:50 - 1:200 IF/ICC: 1:50 - 1:200 FC: 1:20 - 1:50 |
| 理论分子量 | 162kDa/163kDa/164kDa/169kDa |
| 实测分子量 | 169kDa |
| 形式 | Liquid |
| 保存条件 | Store at -20°C. Avoid freeze / thaw cycles. Buffer: PBS with 0.75% BSA,50% glycerol,pH7.3. |
| 偶联物 | Unconjugated |
| 阳性对照 | HepG2,MCF7,Mouse brain,Rat brain |
| 细胞定位 | Chromosome,Cytoplasm,Golgi apparatus,centromere,centrosome,cytoskeleton,kinetochore,microtubule organizing center,spindle,trans-Golgi network |
| 纯化 | Affinity purification |

抗原信息

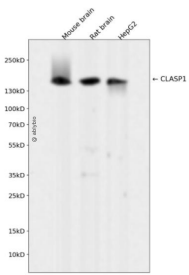
| | |
|------|---|
| 抗原信息 | Recombinant fusion protein corresponding to Human CLASP1. |
| 序列 | IMKTLEAHKDSHKEVVRAAEEAASTLASSIHPEQCIKVLCPHIIQTADYPINLAAIKMQTKVVERIAKESLLQLLVDIIPGLLQGYD NTESSVRKASVFLVAIVSVIGEDLKPFLAQLTGSKMKLLNLYIKRAQTTNSNSSSSSDVSTHS |

靶点信息

| | |
|------|--|
| 研究背景 | CLASPs, such as CLASP1, are nonmotor microtubule-associated proteins that interact with CLIPs (e.g., CLIP170; MIM 179838). CLASP1 is involved in the regulation of microtubule dynamics at the kinetochore and throughout the spindle (Maiato et al., 2003 [PubMed 12837247]).[supplied by OMIM, Mar 2008] |
|------|--|

| | |
|-------|--------------|
| 基因ID | 23332 |
| 基因名 | CLASP1 |
| Swiss | Q7Z460 |
| 别名 | CLASP1;MAST1 |

产品验证



Western blot analysis of CLASP1 expressed in Mouse brain,Rat brain,HepG2 using CLASP1 Rabbit mAb at 1:1000. Secondary antibody: HRP Goat Anti-Rabbit IgG (H+L) at 1:5000. Lysates/proteins: 30ug per lane. Blocking buffer: 5% non-fat dry milk in TBST. Detection: ECL Enhanced Kit. Exposure time: 120s.

实验步骤

访问官网浏览详情: www.ablybio.cn