

# Integrin beta 1 Rabbit mAb

货号: **AYM28646**

## 产品信息

反应	Human
宿主	Rabbit
克隆性	Monoclonal
预测反应	
应用	WB IHC
推荐浓度	<b>WB:</b> 1:500 - 1:2000 <b>IHC:</b> 1:50 - 1:200
理论分子量	87kDa/88kDa/91kDa
实测分子量	150kDa
形式	Liquid
保存条件	Store at -20°C. Avoid freeze / thaw cycles. Buffer: PBS with 0.75% BSA, 50% glycerol, pH7.3.
偶联物	Unconjugated
阳性对照	A-431, U-87MG
细胞定位	Cell junction, Cell membrane, Cell projection, Cleavage furrow, Melanosome, Recycling endosome, Single-pass type I membrane protein, invadopodium membrane, lamellipodium, ruffle membrane, ruffle, sarcolemma
纯化	Affinity purification

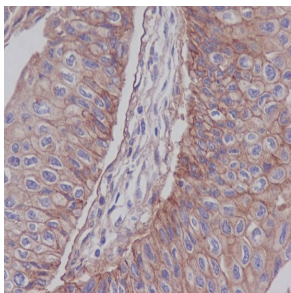
## 抗原信息

抗原信息	Recombinant fusion protein corresponding to Human Integrin beta 1.
序列	MNLQPIFWIGLISSVCCVFAQTDENRCLKANAKSCGECIQAGPNCGWCTNSTFLQEGMPTSARCCDDLEALKKKGCPPDDI ENPRGSKDIKKNKNTNRSKGTAEKLPEDITQIQPQQLVLRRLRSGEPQTFTLKFRAEDYPIDLYYLMDLSYSMKDDLENV KSLGTDLMNEMRRITSDFRIGFGSFVEKTVMPYISTTPAKLRNPCTSEQNCTSPFSYKNVLSLTNKGEVFNELVGKQRISGN LDSPEGGFDAIMQVAVCGSLIGWRNVTRLLVFSTDAGFHAFAGDGKLGIVLPNDGQCHLENNMYTMSHYDYPSIAHLV QKLENNIQTIFAVTEEFQPVYKELKNLIPKSAVGTLSANSSNVIQLIIDAYNSLSSEVILENGKLESEGVTISYKSYCKNGVNGT GENGRKCSNISIGDEVQFEISITSNKCPKDSDFKIRPLGFTEEEVILQYICECECQSEGIPSPKCHEGNGTFECGACRCN EGRVGRHCECSTDEVNSEDMDAYCRKENSSEICSNNGECVCGQCVCRRKRDNTNEIYSGKFCECDNFNCDRSNGLICGG NGVCKCRVCECNPNYTGSAACDCSLDTSTCEASNGQICNGRGICEGVCKCTDPKFQGTCEMCQTCLGVCAEHKECVQ CRAFNGKEKKTCTQECSYFNITKVESRDKLPQPVQDPVSHCKEKDVDDCWYFTYSVNGNNEVMVHVVENPECPGTP D

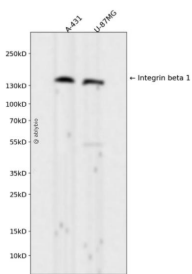
## 靶点信息

研究背景	Integrins are heterodimeric proteins made up of alpha and beta subunits. At least 18 alpha and 8 beta subunits have been described in mammals. Integrin family members are membrane receptors involved in cell adhesion and recognition in a variety of processes including embryogenesis, hemostasis, tissue repair, immune response and metastatic diffusion of tumor cells. This gene encodes a beta subunit. Multiple alternatively spliced transcript variants which encode different protein isoforms have been found for this gene.
基因ID	3688
基因名	ITGB1
Swiss	P05556
别名	CD29;FNRB;GPIIA;MDF2;MSK12;VLA-BETA;VLAB;Integrin beta 1;ITGB1;Integrin $\beta$ 1

## 产品验证



Immunohistochemical analysis of paraffin-embedded human bladder carcinoma, using Integrin beta 1 Antibody.



Western blot analysis of Integrin beta 1 expressed in A-431,U-87MG using Integrin beta 1 Rabbit mAb at 1:1000. Secondary antibody: HRP Goat Anti-Rabbit IgG (H+L) at 1:5000. Lysates/proteins: 30ug per lane. Blocking buffer: 5% non-fat dry milk in TBST. Detection: ECL Enhanced Kit. Exposure time: 120s.

## 实验步骤

访问官网浏览详情: [www.ablybio.cn](http://www.ablybio.cn)