

NCS1 Rabbit mAb

货号: **AYM28644**

产品信息

| | |
|-------|---|
| 反应 | Human,Mouse,Rat |
| 宿主 | Rabbit |
| 克隆性 | Monoclonal |
| 预测反应 | |
| 应用 | WB IHC FC |
| 推荐浓度 | WB: 1:500 - 1:2000 IHC: 1:50 - 1:200 FC: 1:20 - 1:50 |
| 理论分子量 | 19kDa/21kDa |
| 实测分子量 | 22kDa |
| 形式 | Liquid |
| 保存条件 | Store at -20°C. Avoid freeze / thaw cycles. Buffer: PBS with 0.75% BSA,50% glycerol,pH7.3. |
| 偶联物 | Unconjugated |
| 阳性对照 | HeLa,SW620,MCF-7,U-251MG,Mouse bone marrow,Rat kidney |
| 细胞定位 | Cell junction,Cell membrane,Cytoplasm,Golgi apparatus,Golgi stack membrane,Lipid-anchor,Membrane,Peripheral membrane protein,perinuclear region,postsynaptic cell membrane,postsynaptic density,synapse |
| 纯化 | Affinity purification |

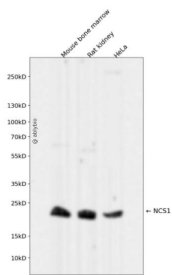
抗原信息

| | |
|------|---|
| 抗原信息 | Recombinant fusion protein corresponding to Human NCS1. |
| 序列 | MGKSNKSLKPEVVEELTRKTYFTEKEVQWYKGFIKDCPSGQLDAAGFQKIYKQFFPFGDPTKFATFVFNVFDENKDGRIE FSEFIQALSVTSRGTLDEKLRWAFKLYDLNDNGYITRNEMLDIVDAIQMVGNTVELPEEENTPEKRVDRIFAMMDKNADG KLTLEFQEGSKADPSIVQALSLYDGLV |

靶点信息

| | |
|-------|---|
| 研究背景 | This gene is a member of the neuronal calcium sensor gene family, which encode calcium-binding proteins expressed predominantly in neurons. The protein encoded by this gene regulates G protein-coupled receptor phosphorylation in a calcium-dependent manner and can substitute for calmodulin. The protein is associated with secretory granules and modulates synaptic transmission and synaptic plasticity. Multiple transcript variants encoding different isoforms have been found for this gene. |
| 基因ID | 23413 |
| 基因名 | NCS1 |
| Swiss | P62166 |
| 别名 | NCS1;FLUP;FREQ |

产品验证



Western blot analysis of NCS1 expressed in Mouse bone marrow, Rat kidney, HeLa using NCS1 Rabbit mAb at 1:1000. Secondary antibody: HRP Goat Anti-Rabbit IgG (H+L) at 1:5000. Lysates/proteins: 30ug per lane. Blocking buffer: 5% non-fat dry milk in TBST. Detection: ECL Enhanced Kit. Exposure time: 120s.

实验步骤

访问官网浏览详情: www.ablybio.cn