

TPH1 Rabbit mAb

货号: **AYM28641**

产品信息

反应	Human,Mouse,Rat
宿主	Rabbit
克隆性	Monoclonal
预测反应	
应用	WB IHC IF/ICC IP FC
推荐浓度	WB: 1:500 - 1:2000 IHC: 1:50 - 1:200 IF/ICC: 1:50 - 1:200 IP: 1:20 - 1:50 FC: 1:20 - 1:50
理论分子量	50kDa/53kDa
实测分子量	51kDa
形式	Liquid
保存条件	Store at -20°C. Avoid freeze / thaw cycles. Buffer: PBS with 0.75% BSA,50% glycerol,pH7.3.
偶联物	Unconjugated
阳性对照	HL-60,SH-SY5Y,THP-1,Mouse brain,Rat brain
细胞定位	cytosol,neuron projection
纯化	Affinity purification

抗原信息

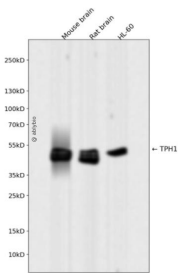
抗原信息	Recombinant fusion protein corresponding to Human TPH1.
序列	LSGHAKVKPFDPKITCKQECLITTFQDVYFVSESFEDAKEKMREFTKTIKRPFVGVKYNPYTRSIQILKDTKSITSAMNELQHD LDVVSDALAKVSRKPSI

靶点信息

研究背景	This gene encodes a member of the aromatic amino acid hydroxylase family. The encoded protein catalyzes the first and rate limiting step in the biosynthesis of serotonin, an important hormone and neurotransmitter. Mutations in this gene have been associated with an elevated risk for a variety of diseases and disorders, including schizophrenia, somatic anxiety, anger-related traits, bipolar disorder, suicidal behavior, addictions, and others.
------	---

基因ID	7166
基因名	TPH1
Swiss	P17752
别名	TPH1;TPRH;TRPH

产品验证



Western blot analysis of TPH1 expressed in Mouse brain,Rat brain,HL-60 using TPH1 Rabbit mAb at 1:10 00. Secondary antibody: HRP Goat Anti-Rabbit IgG (H+L) at 1:5000. Lysates/proteins: 30ug per lane. Blocking buffer: 5% non-fat dry milk in TBST. Detection: ECL Enhanced Kit. Exposure time: 120s.

实验步骤

访问官网浏览详情: www.ablybio.cn