

Phospho-Smad3 (S423 + S425) Rabbit mAb

货号: **AYM28638**

产品信息

反应	Human,Mouse
宿主	Rabbit
克隆性	Monoclonal
预测反应	
应用	WB IHC IF/ICC
推荐浓度	WB: 1:500 - 1:2000 IHC: 1:50 - 1:200 IF/ICC: 1:50 - 1:200
理论分子量	25kDa/35kDa/43kDa/48kDa
实测分子量	55kDa
形式	Liquid
保存条件	Store at -20°C. Avoid freeze / thaw cycles. Buffer: PBS with 0.75% BSA,50% glycerol,pH7.3.
偶联物	Unconjugated
阳性对照	HT-1080,HCT116,Mouse brain,Rat brain
细胞定位	Cytoplasm,Nucleus
纯化	Affinity purification

抗原信息

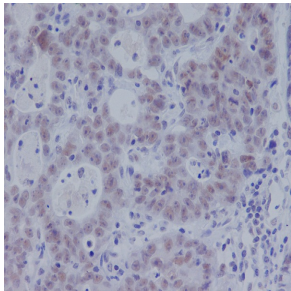
抗原信息	Recombinant fusion protein corresponding to Human Phospho-Smad3 (S423 + S425).
序列	MSSILPFTPIVKRLLGWKKGEQNGQEEKWCEKAVKSLVKKLKTGQLDELEKAITTQNVNTKCITIPRSLDGRLQVSHRKG LPHVIYCRWLWRWPDLHSHHELRAMELCEFAFNMKKDEVCVNPHYHYQRVETPVLPPVLVPRHTEIPAEPPLDDYSHSIPENT NFPAGIEPQSNIPETPPPGYLSGEDGETSDHQMNHSM DAGSPNLSPNPMSPAHNNDLQPVTYCEPA

靶点信息

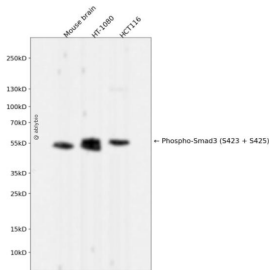
研究背景	The protein encoded by this gene belongs to the SMAD, a family of proteins similar to the gene products of the Drosophila gene 'mothers against decapentaplegic' (Mad) and the C. elegans gene Sma. SMAD proteins are signal transducers and transcriptional modulators that mediate multiple signaling pathways. This protein functions as a transcriptional modulator activated by transforming growth factor-beta and is thought to play a role in the regulation of carcinogenesis.
------	---

基因ID	4088
基因名	SMAD3
Swiss	P84022
别名	HSPC193;HsT17436;JV15-2;LDS1C;LDS3;MADH3;SMAD3

产品验证



Immunohistochemical analysis of paraffin-embedded human gastric adenocarcinoma, using Phospho-Smad3 (S423 + S425) Antibody.



Western blot analysis of Phospho-Smad3 (S423 + S425) expressed in Mouse brain, HT-1080, HC T116 using Phospho-Smad3 (S423 + S425) Rabbit mAb at 1:1000. Secondary antibody: HRP Goat Anti-Rabbit IgG (H+L) at 1:5000. Lysates/proteins: 30ug per lane. Blocking buffer: 5% non-fat dry milk in TBST. Detection: ECL Enhanced Kit. Exposure time: 120s.

实验步骤

访问官网浏览详情: www.ablybio.cn