

Tau Rabbit mAb

货号: **AYM28636**

产品信息

反应	Human,Mouse,Rat
宿主	Rabbit
克隆性	Monoclonal
预测反应	
应用	WB IF/ICC FC
推荐浓度	WB: 1:500 - 1:2000 IF/ICC: 1:50 - 1:200 FC: 1:20 - 1:50
理论分子量	32-45kDa/78- 80kDa
实测分子量	50-80kDa
形式	Liquid
保存条件	Store at -20°C. Avoid freeze / thaw cycles. Buffer: PBS with 0.75% BSA,50% glycerol,pH7.3.
偶联物	Unconjugated
阳性对照	SH-SY5Y,C6
细胞定位	Cell membrane,Cell projection,Cytoplasm,Cytoplasmic side,Peripheral membrane protein,axon,cytoskeleton,cytosol
纯化	Affinity purification

抗原信息

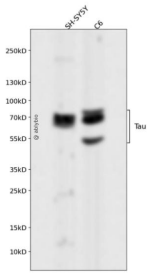
抗原信息	Recombinant fusion protein corresponding to Human Tau.
序列	DTSPR

靶点信息

研究背景	This gene encodes the microtubule-associated protein tau (MAPT) whose transcript undergoes complex, regulated alternative splicing, giving rise to several mRNA species. MAPT transcripts are differentially expressed in the nervous system, depending on stage of neuronal maturation and neuron type. MAPT gene mutations have been associated with several neurodegenerative disorders such as Alzheimer's disease, Pick's disease, frontotemporal dementia, cortico-basal degeneration and progressive supranuclear palsy.
------	---

基因ID	4137
基因名	MAPT
Swiss	P10636
别名	DDPAC;FTDP-17;MAPTL;MSTD;MTBT1;MTBT2;PPND;PPP1R103;TAU;MAPT;Tau

产品验证



Western blot analysis of Tau expressed in SH-SY5Y,C6 using Tau Rabbit mAb at 1:1000. Secondary antibody: HRP Goat Anti-Rabbit IgG (H+L) at 1:5000. Lysates/proteins: 30ug per lane. Blocking buffer: 5% non-fat dry milk in TBST. Detection: ECL Enhanced Kit. Exposure time: 120s.

实验步骤

访问官网浏览详情: www.ablybio.cn