

CD3 epsilon Rabbit mAb

货号: **AYM28635**

产品信息

反应	Human
宿主	Rabbit
克隆性	Monoclonal
预测反应	
应用	WB IHC IP FC
推荐浓度	WB: 1:500 - 1:2000 IHC: 1:50 - 1:200 IP: 1:20 - 1:50 FC: 1:20 - 1:50
理论分子量	23kDa
实测分子量	23kDa
形式	Liquid
保存条件	Store at -20°C. Avoid freeze / thaw cycles. Buffer: PBS with 0.75% BSA,50% glycerol,pH7.3.
偶联物	Unconjugated
阳性对照	Jurkat
细胞定位	Cell membrane,Single-pass type I membrane protein
纯化	Affinity purification

抗原信息

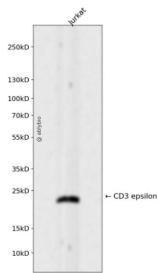
抗原信息	Recombinant fusion protein corresponding to Human CD3 epsilon.
------	--

靶点信息

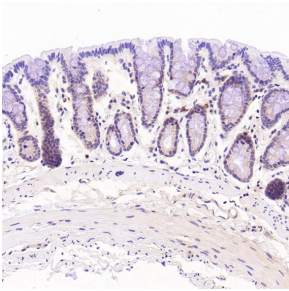
研究背景	The protein encoded by this gene is the CD3-epsilon polypeptide, which together with CD3-gamma, -delta and -zeta, and the T-cell receptor alpha/beta and gamma/delta heterodimers, forms the T-cell receptor-CD3 complex. This complex plays an important role in coupling antigen recognition to several intracellular signal-transduction pathways. The genes encoding the epsilon, gamma and delta polypeptides are located in the same cluster on chromosome 11. The epsilon polypeptide plays an essential role in T-cell development. Defects in this gene cause immunodeficiency. This gene has also been linked to a susceptibility to type I diabetes in women.
基因ID	916

基因名	CD3E
Swiss	P07766
别名	CD3 epsilon

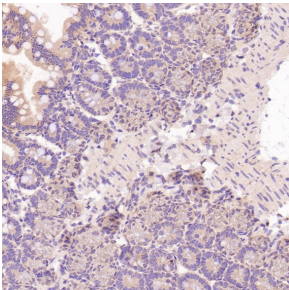
产品验证



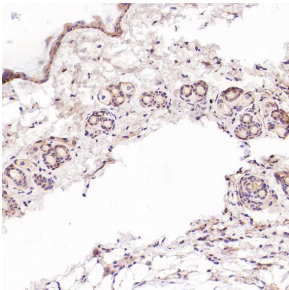
Western blot analysis of CD3 epsilon expressed in Jurkat using CD3 epsilon Rabbit mAb at 1:10 00. Secondary antibody: HRP Goat Anti-Rabbit IgG (H+L) at 1:5000. Lysates/proteins: 30ug per lane. Blocking buffer: 5% non-fat dry milk in TBST. Detection: ECL Enhanced Kit. Exposure time: 120s.



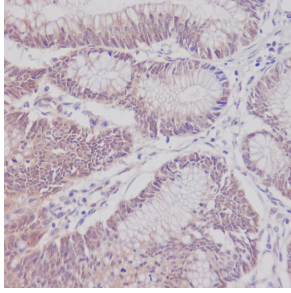
Immunohistochemical analysis of paraffin-embedded Rat stomach, using the Antibody at 1:100 dilution.



Immunohistochemical analysis of paraffin-embedded Mouse intestine, using the Antibody at 1: 100 dilution.



Immunohistochemical analysis of paraffin-embedded Mouse skin, using the Antibody at 1:100 d ilution.



Immunohistochemical analysis of paraffin-embedded human colon cancer, using CD3 epsilon A antibody.

实验步骤

访问官网浏览详情: www.ablybio.cn