

Estrogen Inducible Protein pS2 Rabbit mAb

货号: **AYM28630**

产品信息

反应	Human,Mouse,Rat
宿主	Rabbit
克隆性	Monoclonal
预测反应	
应用	WB IHC ICC IP FC
推荐浓度	WB: 1:500 - 1:2000 IHC: 1:50 - 1:200 ICC: 1:50 - 1:200 IP: 1:20 - 1:50 FC: 1:20 - 1:50
理论分子量	9kDa
实测分子量	9kDa
形式	Liquid
保存条件	Store at -20°C. Avoid freeze / thaw cycles. Buffer: PBS with 0.75% BSA,50% glycerol,pH7.3.
偶联物	Unconjugated
阳性对照	Mouse stomach,Rat stomach
细胞定位	Secreted
纯化	Affinity purification

抗原信息

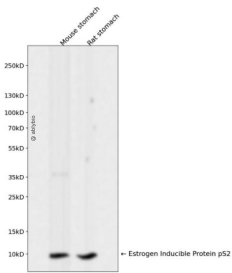
抗原信息	Recombinant fusion protein corresponding to Human Estrogen Inducible Protein pS2.
序列	EAQTETCTVAPRERQNCGFPGVTPSQCANKGCCFDDTVRGVPWCFYPNTIDVPPEECEF

靶点信息

研究背景	Members of the trefoil family are characterized by having at least one copy of the trefoil motif, a 40-amino acid domain that contains three conserved disulfides. They are stable secretory proteins expressed in gastrointestinal mucosa. Their functions are not defined, but they may protect the mucosa from insults, stabilize the mucus layer, and affect healing of the epithelium. This gene, which is expressed in the gastric mucosa, has also been studied because of its expression in human tumors. This gene and two other related trefoil family member genes are found in a cluster on chromosome 21.
------	--

基因ID	7031
基因名	TFF1
Swiss	P04155
别名	TFF1;BCEI;D21S21;HP1.A;HPS2;pNR-2;pS2

产品验证



Western blot analysis of Estrogen Inducible Protein pS2 expressed in Mouse stomach,Rat stomach using Estrogen Inducible Protein pS2 Rabbit mAb at 1:1000. Secondary antibody: HRP Goat Anti-Rabbit IgG (H+L) at 1:5000. Lysates/proteins: 30ug per lane. Blocking buffer: 5% non-fat dry milk in TBS. Detection: ECL Enhanced Kit. Exposure time: 120s.

实验步骤

访问官网浏览详情: www.ablybio.cn