

EB3 Rabbit mAb

货号: **AYM28629**

产品信息

反应	Human,Mouse,Rat
宿主	Rabbit
克隆性	Monoclonal
预测反应	
应用	WB IHC IF/ICC FC
推荐浓度	WB: 1:500 - 1:2000 IHC: 1:50 - 1:200 IF/ICC: 1:50 - 1:200 FC: 1:20 - 1:50
理论分子量	30kDa/31kDa
实测分子量	32kDa
形式	Liquid
保存条件	Store at -20°C. Avoid freeze / thaw cycles. Buffer: PBS with 0.75% BSA,50% glycerol,pH7.3.
偶联物	Unconjugated
阳性对照	Mouse brain,Mouse kidney
细胞定位	Cytoplasm,cytoskeleton
纯化	Affinity purification

抗原信息

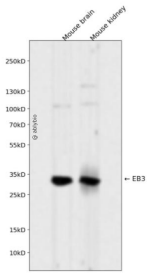
抗原信息	Recombinant fusion protein corresponding to Human EB3.
序列	MAVNVYSTSVTSENLSRHDMWLAWVNDLHNLNYTKIEQLCSGAAYCQFMDMLFPGCVHLRKKVKFQAKLEHEYIHNFKVLQ AAFKKMGVDKIIPVEKLVKGFQDNFEFIQWFKKFFDANYDGKDYNPLLARQGQDVAPPNPGDQIFNKSKKLIGTAVPQ RTSPTGPKNMQTSGRLSNVAPPCLRKNPSSARNGGHETDAQILELNQQLVDLKLTVDGLERDFYFSKLRDIELICQEHE SENSPVISGIIGILYATEEGFAPPEDDEIEEHQQEDQDEY

靶点信息

研究背景	The protein encoded by this gene is a member of the RP/EB family of genes. The protein localizes to the cytoplasmic microtubule network and binds APCL, a homolog of the adenomatous polyposis coli tumor suppressor gene.
------	--

基因ID	22924
基因名	MAPRE3
Swiss	Q9UPY8
别名	MAPRE3;EB3;EBF3;EBF3-S;RP3

产品验证



Western blot analysis of EB3 expressed in Mouse brain, Mouse kidney using EB3 Rabbit mAb at 1:1000. Secondary antibody: HRP Goat Anti-Rabbit IgG (H+L) at 1:5000. Lysates/proteins: 30ug per lane. Blocking buffer: 5% non-fat dry milk in TBST. Detection: ECL Enhanced Kit. Exposure time: 120s.

实验步骤

访问官网浏览详情: www.ablybio.cn