

eIF4EBP1 Rabbit mAb

货号: **AYM28627**

产品信息

反应	Human,Mouse,Rat
宿主	Rabbit
克隆性	Monoclonal
预测反应	
应用	WB IHC ICC IP FC
推荐浓度	WB: 1:500 - 1:2000 IHC: 1:50 - 1:200 ICC: 1:50 - 1:200 IP: 1:20 - 1:50 FC: 1:20 - 1:50
理论分子量	12kDa
实测分子量	18kDa
形式	Liquid
保存条件	Store at -20°C. Avoid freeze / thaw cycles. Buffer: PBS with 0.75% BSA,50% glycerol,pH7.3.
偶联物	Unconjugated
阳性对照	MCF7,HeLa,Mouse skeletal muscle
细胞定位	cytoplasm,cytosol
纯化	Affinity purification

抗原信息

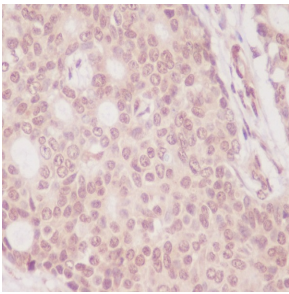
抗原信息	Recombinant fusion protein corresponding to Human eIF4EBP1.
序列	TRIIYDRKFLMECRNSPVTKTPPRDLPTIPGVTSPPSSDEPPMEASQSHLRNSPEDKRAGGEESQFEMDI

靶点信息

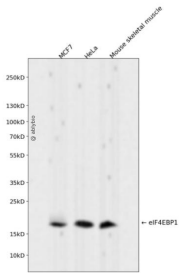
研究背景	This gene encodes one member of a family of translation repressor proteins. The protein directly interact s with eukaryotic translation initiation factor 4E (eIF4E), which is a limiting component of the multisubunit complex that recruits 40S ribosomal subunits to the 5' end of mRNAs. Interaction of this protein with eIF4 E inhibits complex assembly and represses translation. This protein is phosphorylated in response to vari ous signals including UV irradiation and insulin signaling, resulting in its dissociation from eIF4E and activ ation of mRNA translation.
------	--

基因ID	1978
基因名	EIF4EBP1
Swiss	Q13541
别名	4E-BP1;4EBP1;BP-1;PHAS-I;EIF4EBP1

产品验证



Immunohistochemical analysis of paraffin-embedded human breast carcinoma, using eIF4EBP1 Antibody.



Western blot analysis of eIF4EBP1 expressed in MCF7, HeLa, Mouse skeletal muscle using eIF4EBP1 Rabbit mAb at 1:1000. Secondary antibody: HRP Goat Anti-Rabbit IgG (H+L) at 1:5000. Lysates/proteins: 30ug per lane. Blocking buffer: 5% non-fat dry milk in TBST. Detection: ECL Enhanced Kit. Exposure time: 120s.

实验步骤

访问官网浏览详情: www.ablybio.cn