

# FLI1 Rabbit mAb

货号: **AYM28621**

## 产品信息

反应	Human,Mouse
宿主	Rabbit
克隆性	Monoclonal
预测反应	
应用	WB IHC
推荐浓度	<b>WB:</b> 1:500 - 1:2000 <b>IHC:</b> 1:50 - 1:200
理论分子量	29kDa/43kDa/47kDa/50kDa
实测分子量	51kDa
形式	Liquid
保存条件	Store at -20°C. Avoid freeze / thaw cycles. Buffer: PBS with 0.75% BSA,50% glycerol,pH7.3.
偶联物	Unconjugated
阳性对照	Jurkat,Mouse lung
细胞定位	Nucleus
纯化	Affinity purification

## 抗原信息

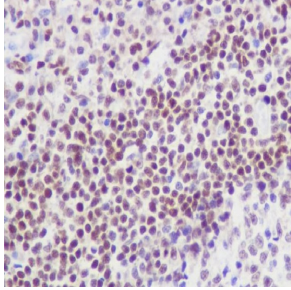
抗原信息	Recombinant fusion protein corresponding to Human FLI1 .
序列	MDGTIKEALSVVSDQSLFDSAYGAAAHLPKADMTASGSPDYGQPHKINLPPQQEWINQPVRVNVKREYDHMNGSRE SPVDCSVSKCSKLVGGGESNPM

## 靶点信息

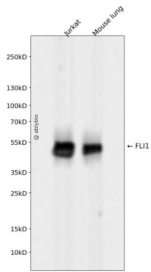
研究背景	This gene encodes a transcription factor containing an ETS DNA-binding domain. The gene can undergo a t(11;22)(q24;q12) translocation with the Ewing sarcoma gene on chromosome 22, which results in a fusion gene that is present in the majority of Ewing sarcoma cases. An acute lymphoblastic leukemia-associated t(4;11)(q21;q23) translocation involving this gene has also been identified. Alternative splicing results in multiple transcript variants.
基因ID	2313

基因名	FLI1
Swiss	Q01543
别名	FLI1;EWSR2;SIC-1;BDPLT21

## 产品验证



Immunohistochemical analysis of paraffin-embedded human tonsil, using FLI1 Antibody .



Western blot analysis of FLI1 expressed in Jurkat, Mouse lung using FLI1 Rabbit mAb at 1:1000. Secondary antibody: HRP Goat Anti-Rabbit IgG (H+L) at 1:5000. Lysates/proteins: 30ug per lane. Blocking buffer: 5% non-fat dry milk in TBST. Detection: ECL Enhanced Kit. Exposure time: 1 20s.

## 实验步骤

访问官网浏览详情: [www.ablybio.cn](http://www.ablybio.cn)