

Endo G Rabbit mAb

货号: **AYM28618**

产品信息

反应	Human,Mouse,Rat
宿主	Rabbit
克隆性	Monoclonal
预测反应	
应用	WB
推荐浓度	WB: 1:500 - 1:2000
理论分子量	30kDa
实测分子量	30kDa
形式	Liquid
保存条件	Store at -20°C. Avoid freeze / thaw cycles. Buffer: PBS with 0.75% BSA,50% glycerol,pH7.3.
偶联物	Unconjugated
阳性对照	SH-SY5Y,Mouse liver,Rat liver,Rat skeletal muscle,Rat heart
细胞定位	Mitochondrion
纯化	Affinity purification

抗原信息

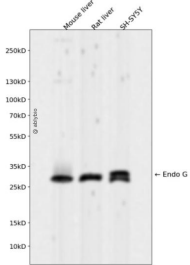
抗原信息	Recombinant fusion protein corresponding to Human Endo G.
序列	GPLFLPRTEADGKSYVKYQVIGKNHVAVPTHFFKVLILEAAGGQIELRTYVMPNAPVDEAIPLERFLVPIESIERASGLLFVPNILARAGSLKAITAGSK

靶点信息

研究背景	The protein encoded by this gene is a nuclear encoded endonuclease that is localized in the mitochondrion. The encoded protein is widely distributed among animals and cleaves DNA at GC tracts. This protein is capable of generating the RNA primers required by DNA polymerase gamma to initiate replication of mitochondrial DNA. [provided by RefSeq, Jul 2008]
基因ID	2021

基因名	ENDO G
Swiss	Q14249
别名	ENDO G; endonuclease G

产品验证



Western blot analysis of Endo G expressed in Mouse liver, Rat liver, SH-SY5Y using Endo G Rabbit mAb at 1:1000. Secondary antibody: HRP Goat Anti-Rabbit IgG (H+L) at 1:5000. Lysates/proteins: 30ug per lane. Blocking buffer: 5% non-fat dry milk in TBST. Detection: ECL Enhanced Kit. Exposure time: 120s.

实验步骤

访问官网浏览详情: www.ablybio.cn